

FLINT & GENESEE COUNTY, MICHIGAN

COMMUNITY HEALTH NEEDS ASSESSMENT

REPORT 2025



GREATER FLINT
HEALTH COALITION



GENESEE COUNTY
HEALTH DEPARTMENT

HENRY
FORD
HEALTH

HURLEY
MEDICAL CENTER

McLaren
FLINT



Table of Contents

Executive Summary	3
Identification and Prioritization of Community Health Needs	4
Implementation Plan Development	4
I. Introduction	5
Community Health Needs Assessment Population	5
Flint/Genesee County Demographics	5
Organizations Completing the CHNA	6
II. Infrastructure and Partnerships	10
Partnerships and Potential Resources to Address Community Health Needs	10
III. Data Collection and Analysis	12
Data Sources	13
Indicators and Data Measures	13
2025 Genesee County Community Health Needs Assessment	14
Methods and Approach	16
Factors that Affect Health	17
IV. Community Health Needs Identified & Assessment Priorities	18
Substance Use	19
Mental Health	22
Social Determinants of Health	23
Housing	24
Employment	27
Education	28
Food Insecurity	31
Safety & Violence	32
Environment	34
Poverty	35
Obesity and Healthy Behaviors	37
Health Care Access	39
Chronic Disease Burden	42
Maternal & Child Health	45
2025 CHNA Community Resident Survey Highlights	51
Data Resources	53

Appendix A: Evaluation of Impact From 2022 CHNA Implementation	54
Community-Wide Strategy to Address the Opioid Epidemic and Other Emerging Substance Use	54
Mid-Michigan Community Health Access Program	55
Commit to Fit	56
Connecting Kids to Coverage.	57
Flint Healthcare Employment Opportunities (FHEO) Program.	58
Henry Ford Genesys Hospital (Formerly Ascension Genesys Hospital)	58
McLaren Flint.	60
Hurley Medical Center	65

Community Health Needs Assessment Report 2025



Executive Summary

The residents of Genesee County, Michigan and its urban core, the city of Flint, are served by three local hospital systems: Henry Ford Genesys Hospital, Hurley Medical Center, and McLaren Flint. These separate hospital systems have collaborated with the 501(c)3 nonprofit Greater Flint Health Coalition and a collection of multi-sector and community stakeholders, including the Genesee County Health Department, to complete a joint Community Health Needs Assessment (CHNA) for the Flint & Genesee County region. The identification of Flint & Genesee County's most critical health needs and issues is based upon data and information provided by community residents, health care consumers, health care professionals, community partners, and multi-sector representatives who participated in meetings of the Greater Flint Health Coalition's network of community organizations and partners or responded to a community-wide survey of individuals and stakeholders who live and/or work in Genesee County. The identified community health needs are also informed by the Greater Flint Health Coalition's Community Data Scorecard, a collection of over 500 metrics reviewed annually and designed to measure health status and chronic disease priorities, social and economic factors impacting residents, and healthcare delivery system access and utilization trends experienced in the region.

Identification and Prioritization of Community Health Needs

The joint Community Health Needs Assessment conducted by this collaboration has identified seven priority health needs for the Flint & Genesee County community. The identified health needs were selected based upon their potential to impact both short- and long-term health outcomes, the ability of local health care systems to have an impact on addressing the identified needs, current priorities and programs, and effectiveness of existing programs. Last year's version of the CHNA, health inequities has been its own section; however, understanding the role that it plays in all priorities, each section of the CHNA will highlight current disparities. The 2025 priority health needs of focus for the Flint & Genesee County community are:

- Substance Use
- Mental Health (inclusive of Stress, Anxiety, and Depression)
- Social Determinants of Health
 - Housing
 - Employment
 - Education
 - Food Insecurity
 - Safety & Violence
 - Environment
 - Poverty
- Obesity & Healthy Behaviors
- Health Care Access
- Chronic Disease Burden
- Maternal & Child Health

Implementation Plan Development

As a result of the completed 2025 Community Health Needs Assessment, the Greater Flint Health Coalition will convene the three local hospital systems (Henry Ford Genesys Hospital, Hurley Medical Center, and McLaren Flint) to develop implementation plans that seek to individually and collectively address identified Community Health Needs identified in this assessment. While each Genesee County hospital partner is required to have its own CHNA Implementation Plan, the local partners have committed to collaborate via the Greater Flint Health Coalition to align implementation plan activities where possible to leverage existing programs, avoid duplication, build economies of scale, and maximize available resources through combined community benefit investment. These collective implementation plans will form the basis of a shared Community Health Improvement Plan to be implemented in collaboration with the members and stakeholders of the Greater Flint Health Coalition.



I. Introduction

Community Health Needs Assessment Population

For the purpose of the 2025 Community Health Needs Assessment (CHNA), Henry Ford Genesys Hospital, Hurley Medical Center, and McLaren Flint have defined their joint service area and population as Genesee County, Michigan. This is the same population served by the Greater Flint Health Coalition and Genesee County Health Department. Genesee County includes the city of Flint and encompasses the following zip codes: 48502, 48503, 48504, 48505, 48506, 48507, 48532, 48509, 48519, 48529, 48420, 48423, 48430, 48433, 48436, 48438, 48439, 48449, 48451, 48457, 48458, 48463, and 48473.

Flint/Genesee County Demographics

Located 70 miles north of Detroit, Genesee County, which includes its major urban core the city of Flint, was at one time the national epicenter of automotive forethought and production. As the birthplace of General Motors (GM) in 1908 and home to the United Auto Workers' (UAW) famous Sit-Down Strike of 1936-37, Flint & Genesee County helped define the American auto industry. By the late 1970's, GM employed more than 80,000 workers in the county. Impacted by national deindustrialization in the 1980s and thereafter, a period of disinvestment, depopulation, and urban decay would follow as the automotive industry declined rapidly. By 2010, less than 8,000 GM jobs remained, approximately 10% of what once defined the community's manufacturing and economic base.

According to U.S. Census Bureau data, Genesee County's current population of 401,522 includes a racial composition of 72.6% White, 19.6% African-American, and 4.4% Hispanic/Latino. While nearly 200,000 people once lived within the city of Flint during its peak in the 1960s and 1970s, as of 2023 only 79,654 residents remain, a majority being African-American (60.8%).

Within Genesee County, 23% of the population is 17 years of age and under, 9% are ages 18-24, 13% are ages 25-34, 12% are ages 35-44, 13% are ages 45-54, 14% are ages 55-64, and 16% are over the age of 65. As of 2023 data, almost 1 in 5 Genesee County residents are 65 years or older, compared to 2000 when the number was 1 in 8. The older adult population will continue to grow in numbers and percent of total population.

Population outmigration has impacted Flint & Genesee County with decreased tax revenue and an increase in urban decay and neighborhood blight, especially in the city of Flint. As of 2023, there are 20,171 vacant homes in Genesee County, with 11,433 in the city of Flint (American Community Survey).

Meanwhile, the poverty rate as of 2023 in Genesee County is 18%, with the city of Flint having a poverty rate of 40.7% (U.S. Census Bureau, 5-year estimates). These rates for both Genesee County and city of Flint remain much higher than state (13.5%) and national (12.5%) rates.

Environmental health factors significantly affect residents of the region. The city of Flint continues recovery efforts resulting from the Flint Water Crisis. Flint water has met state and federal standards for lead in drinking water for the past six years however, residents justifiably remain skeptical. As of March 2025, 97% of lead service lines have been replaced. The city of Flint is working with state and federal funding partners to ensure funds remain available for further service line excavation and replacement. In May 2025, the Environmental Protection Agency lifted a 2016 emergency order on Flint's drinking water, indicating the city of Flint has completed all requirements of the 2016 EPA Safe Drinking Water Act. Social, economic, and environmental factors impact the health status among residents throughout Genesee County, with significant impact on residents of the city of Flint, where higher rates of poverty are associated with poorer educational outcomes, employment rates, crime / incarceration, and lack of health insurance. Residents, who are low-income, minority, or uninsured are disproportionately impacted by environmental issues such as pollution, crime, property abandonment, lack of areas to exercise outdoors, and lack of access to healthy foods.

For multiple years Genesee County has been ranked among the least healthy counties in Michigan for health outcomes and health factors. The age-adjusted death rates for heart disease, stroke, diabetes mellitus, and kidney disease are higher in the county than statewide. While health status indicates poor overall population health, data for minority, low income, and uninsured populations indicate these populations are experiencing worse health outcomes when compared to the population as a whole. (The 2025 Community Health Needs Assessment will highlight disparities throughout each priority section.)

Organizations Completing the CHNA

The 2025 Community Health Needs Assessment is a partnership of Greater Flint Health Coalition member organizations including the Genesee County Health Department, led by the three area hospital systems that serve the Flint & Genesee County population: Henry Ford Genesys Hospital, Hurley Medical Center, and McLaren Flint.

HENRY FORD GENESYS HOSPITAL

As a Ministry of the Catholic Church, Henry Ford Genesys Hospital is a non-profit hospital providing medical care to Genesee and neighboring counties. Formerly Ascension Genesys Hospital, this hospital was renamed Henry Ford Genesys Hospital in 2024 after Ascension's joint venture with Henry Ford Health. As a leading health care provider in Mid-Michigan, Henry Ford Genesys is anchored by a 21st century, 400 bed inpatient facility, built both clinically and architecturally around a patient-centered care philosophy. Henry Ford Genesys employs a medical staff of 559 primary and specialty care clinicians including nurse practitioners,



physician assistants, and physicians. Henry Ford Genesys had 16,655 patient discharges and provided \$19,828,270 in care for persons living in poverty and \$57,246,923 on community benefit programs in fiscal year 2024.

Serving Michigan since 1997, Henry Ford Genesys is continuing the long and valued tradition of addressing the health of the people in our community, following in the footsteps of the Sisters of St. Joseph legacy in 1920. After witnessing the success of the Sisters of St. Joseph's Kalamazoo hospital, Detroit Bishop Michael J. Gallagher asked the Sisters if they would come to Flint and open a hospital for the rapidly growing population there. The Sisters arrived in Flint in September 1920, and opened St. Joseph Hospital in a former residence. The hospital expanded as health needs grew. At the same time, other local hospitals in the Flint area were being built. Eventually, hospital facilities became more and more costly to maintain and upgrade, and affiliations developed. Finally, the local hospitals made history by consolidating four hospitals into one, with the opening of Genesys Regional Medical Center. In 1999, The Daughters of Charity National Health System and the Sisters of St. Joseph Health System in Michigan came together to form Ascension Health, a national Catholic healthcare system, in order to extend into the future a shared healing Mission — caring for those persons who are poor and most in need. Following the joint venture with Henry Ford Health and renaming of Genesys Hospital, the hospital retains its Catholic mission.

For more information about Henry Ford Genesys Hospital, visit <https://www.henryford.com/locations/genesys-hospital>.

HURLEY MEDICAL CENTER

Hurley Medical Center is a 443-bed premier public teaching hospital recognized as a regional leader in advanced specialized health care. Every year, more than 20,000 people choose Hurley for their inpatient hospital care and its Emergency Department handles over 80,000 annual emergency cases. As the region's only Level 1 Trauma Center and with the region's only Burn Unit, Neonatal Intensive Care Unit, Pediatric Intensive Care Unit, and Pediatric Emergency Department, Hurley continues to honor its commitment to provide the highest level of critical care to those who need its services.



As well as being a recognized leader in clinical care, Hurley Medical Center is a highly-regarded educator of tomorrow's professionals, maintaining affiliations with Michigan State University, the University of Michigan-Ann Arbor, the University of Michigan-Flint, Children's Hospital of Michigan-Detroit Medical Center, Oakland University, Mott Community College, and Henry Ford Health System. With over 2,700 employees, Hurley is also a major contributor to local economic development and one of Genesee County's largest and most consistent employers.

Though much has changed over the past 110 years, Hurley's standards of excellence and delivery of exceptional care have not. But much more remains to be done. In these times where healthcare economics are in flux and the health status of the region is poor, Hurley Medical Center's vision continues to include expanding beyond the walls of the hospital to provide the best possible care to its patients and their families before they get sick and after they leave the hospital's care. Hurley's job is to become a partner in caring so that people can stay well, live healthier lives and, when they are sick, return to health faster and with better outcomes.

McLAREN FLINT

McLaren Flint is a 378-bed tertiary teaching hospital in Flint, Michigan, offering a full range of comprehensive and advanced services for residents in greater Genesee County. McLaren Flint is affiliated with Michigan State University (MSU) College of Human Medicine in its medical residency programs, including family practice, internal medicine, general surgery, and orthopedic surgery. McLaren Flint also maintains Fellowship programs in vascular surgery, health psychology, anesthesia, cardiology, pulmonary and critical care. McLaren Flint is certified as a BCBSM Blue Distinction Center+ for Bariatric Surgery and Spine Surgery and has earned the Advanced Comprehensive Stroke Center Designation by the Joint Commission and 2024 Get with the Guidelines Gold Plus Award for Stroke Care from the American Heart Association. McLaren Flint is further designated a Breast Imaging Center of Excellence by the American College of Radiology and holds Laboratory Accreditation from the American College of Pathologists.



Centers of Excellence include heart and vascular, neuro stroke, orthopedics, oncology, and women's services.

The Karmanos Cancer Institute at McLaren Flint is accredited by the American College of Radiology Radiation Oncology Practice and Michigan Radiation Oncology Quality Consortium (MROQC) 2021 Gold. The Karmanos Cancer Institute at McLaren Flint offers specialized care including medical, gynecologic, head and neck, radiation, and surgical oncology. As part of the Karmanos Cancer Network, patients also have access to genetic counseling and clinical trials. The McLaren Proton Therapy Center, located on the McLaren Flint campus, provides proton radiation that is delivered directly to tumors, thereby exposing less tissue to the treatment and protecting vital organs. This approach can lead to fewer side effects and a better quality of life for patients both during and after treatment.

GENESEE COUNTY HEALTH DEPARTMENT

The Genesee County Health Department (GCHD) is a county government agency governed by a 9-member elected Board of Commissioners and is responsible for safeguarding and enhancing public health within Genesee County. Under the Michigan Public Health Code (Act 368 of 1978), GCHD fulfills its statutory obligations through clinical and community services and partnerships. The vision of GCHD is to be Genesee County's trusted public health resource, supporting communities to thrive. GCHD aims to improve public health and equity in Genesee County through exceptional services, advocacy, and meaningful collaboration.

GCHD upholds the following values:

- Integrity & Excellence: Creating fair and just opportunities for all to attain their highest level of health.
- Community Driven: Our community-driven approach focuses on building mutual respect, fostering collaboration and partnerships, promoting inclusivity, and empowering all.
- Growth-oriented: Commitment to continuous learning and development through ongoing evaluation and quality improvement.
- Health Equity: Creating fair and just opportunities for all to attain their highest level of health.

GCHD's operations are organized across four key divisions: Environmental Health, Community Health Education and Promotion, Personal Health Services, and Administrative Services. These divisions work collaboratively to ensure comprehensive public health services are delivered effectively throughout the county.

The Environmental Health Division safeguards public health and the environment by upholding the Michigan Public Health Code (Act 368, P.A. 1978), the Michigan Food Law, and various state and local regulations. It is responsible for licensing and inspecting food services and permitting and inspecting water wells and septic systems. It also conducts inspections of body art establishments, foster care facilities, recreational camps, and campgrounds. Additionally, the department tests water quality at public swimming pools and provides consultation on hazardous materials.

The Community Health Division oversees several key public health initiatives. The division includes programs such as the Maternal Child Health Network, Healthy Start Program, Women, Infants, and Children (WIC), Safe Sleep, Emergency Preparedness, and Tobacco Licensing and Regulation. These programs aim to educate and empower Genesee County residents to make informed health choices.

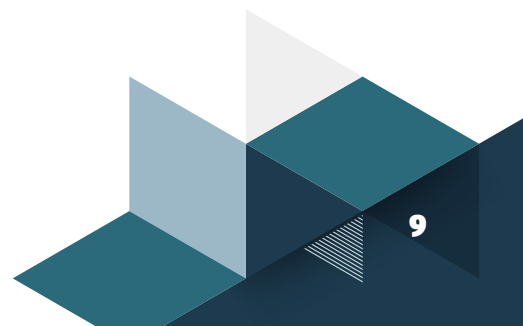
The Personal Health Division focuses on several critical health services: sexual health and family planning services, immunizations, hearing and vision screenings for children, Children's Special Health Care Services, and healthcare enrollment. GCHD conducts disease surveillance and outbreak investigations to mitigate the spread of disease. The division also manages the Kindergarten Oral Health Assessment program in Genesee County.

The Administrative Services division provides operational, planning, and financial support to the health department. It oversees the laboratory and supports the medical director's office, ensuring efficient operations and strategic direction.

GREATER FLINT HEALTH COALITION

Established in 1996, the Greater Flint Health Coalition (GHFC) is a Flint, Michigan-based non-profit collective impact organization and partnership between Genesee County hospitals, physicians, businesses, insurers, public health professionals, policymakers, government leaders, educators, organized labor, community organizations, residents, and all those concerned about the well-being of our community and its residents. The two-fold mission of the Greater Flint Health Coalition is to improve the health status of Genesee County residents and to improve the quality and cost-effectiveness of the health care system in the community.

Through serving those living in Flint and Genesee County, the vision of GFHC is a healthy Genesee County community practicing healthy lifestyles with access to the best and most cost-effective health and medical care. As Genesee County's neutral convener and backbone support organization for community, public health, and health care initiatives, the Greater Flint Health Coalition works together to achieve collective impact to improve the health status of Flint & Genesee County residents. Currently, the GFHC is the neutral convener of 20 multi-sector coalitions and operates a variety of community-based programs including Commit to Fit, Mid-Michigan Community Health Access Program (CHAP), Connecting Kids to Coverage, and the Flint Healthcare Employment Opportunities (FHEO) Program.



II. Infrastructure and Partnerships



Partnerships and Potential Resources to Address Community Health Needs

Each year, the Greater Flint Health Coalition facilitates a Community Data Scorecard Project to collect, aggregate, and trend a variety of key public health, healthcare, and community health needs. The Community Data Scorecard Project informs the Community Health Needs Assessment, which is conducted every three years.

The 2025 CHNA includes input and data from residents, subject matter experts, and key community organizations representing the broad interests of Genesee County. Specifically, the 2025 CHNA includes input from persons with expertise in public health, health care, and government programs, with special emphasis on inclusive engagement of community leaders, residents, and members of the medically underserved, low income, and minority populations. The following list represents the 2025 CHNA participating organizations and potential community

resources to address the significant health needs identified in the CHNA (in alphabetical order):

- Blue Cross Blue Shield of Michigan
- City of Flint
- Genesee County Department of Health and Human Services
- Genesee County Health Department
- Genesee County Medical Society
- Genesee County Osteopathic Society
- Genesee Health Plan
- Genesee Health System (Genesee County Community Mental Health)
- Genesee Intermediate School District
- Greater Flint Health Coalition
- Health Alliance Plan
- Hamilton Community Health Network
- Henry Ford Genesys Hospital
- Hurley Medical Center
- Meridian Health Plan of Michigan
- McLaren Flint
- McLaren Health Plan
- Molina Healthcare of Michigan
- Mott Children's Health Center
- Region 10 Prepaid Inpatient Health Plan (PIHP)
- United Way of Genesee County

The GFHC's vast network with representation from approximately 50 community-based organizations as well as residents (representing all community demographics) has also been convened to discuss and inform relevant community health needs, data, resources, and programs.

The lead organizations completing the 2025 Community Health Needs Assessment included the Greater Flint Health Coalition, Henry Ford Genesys Hospital, Hurley Medical Center, and McLaren Flint. This collaborative worked together to collect data and input from the participating organizations and data sources listed in 2025 CHNA Section III. These primary partners represent existing health care facilities and resources within the community that are available to respond to the health needs of the community. They include Genesee County's three major health system facilities (Henry Ford Genesys Hospital, Hurley Medical Center, and McLaren Flint) and the local health department (Genesee County Health Department). They also include the Greater Flint Health Coalition, a neutral, non-profit health coalition whose membership includes multi-sector participation from additional health care facilities and resources in the community, such as (but not limited to) Genesee County's federally qualified health centers, safety-net healthcare providers for mental health and children, physician organizations, community and social service agencies, health insurers, policymakers, educators, and more.



III. Data Collection and Analysis



Data Sources

Greater Flint Health Coalition facilitates public and privately sourced data collection, aggregation, and analysis to inform the completion of the Community Health Needs Assessment. The following list represents the 2025 CHNA public data sources:

- Centers for Disease Control and Prevention
- American Community Survey
- Behavioral Risk Factor Surveillance System (BRFSS)
- National Center for Chronic Disease Prevention and Health Promotion
- National Vital Statistics System
- Health Resources and Services Administration
- Michigan Department of Health and Human Services (state public health department)
- Michigan Health & Hospitals Association
- National Center for Education Statistics
- National Center for Healthcare Statistics
- United States Department of Housing and Urban Development
- United States Census Bureau
- United States Department of Agriculture
- United States Department of Education
- United States Department of Justice
- United States Department of Labor
- University of Wisconsin Population Health Institute, County Health Rankings Report
- Annie E. Casey Foundation, Kids Count Data Book
- Community Commons
- Feeding America
- US News & World Report “Healthiest Communities”
- State Of Flint Kids Flint children’s health dashboard
- MiSchoolData, Michigan’s official education data source

The 2025 CHNA leveraged and utilized the GFHC’s existing Community Data Scorecard Project, which is a collaborative data collection project completed annually by the GFHC and its community and institutional partners that consists of public and private data shared and analyzed by local hospitals, insurers, physicians, government agencies, health departments, school systems, businesses, and residents.

The GFHC’s Community Data Scorecard Project utilizes multiple types of data collection and aggregation methods to complete data analysis, including:

1. Quantitative data, both public and private is provided by the sources listed in this section; Literature reviews are completed to identify State and National benchmarks that relate to the indicators/metrics measured through the quantitative data sources;
2. Social determinant of health (SDOH) needs screening data collected in aggregate from health plan partnerships.
3. Qualitative data provided through a community health needs assessment survey which was distributed by the Greater Flint Health Coalition, the 2025 CHNA primary partner organizations (to patients visiting clinical delivery sites as well as stakeholders), and the GFHC Community Referral Network (to residents served in community locations). The survey was available in multiple languages and was also shared via social media channels and the network of the Greater Flint Health Coalition. The 2025 CHNA’s utilization of multiple types of data collection and aggregation methods allowed for data-driven input across a broad range of community informed indicators relating to overall population health, social determinants of health (including geographic/location differences in health outcomes), and the needs of disadvantaged populations including uninsured persons, low-income persons, and minority groups within the Genesee County community.

Indicators and Data Measures

The 2025 CHNA includes a significant amount of data measures across multiple categories relating to health and health factors. The Community Data Scorecard / CHNA process includes trend data for a total of over 500 different indicators.

2025 Genesee County Community Health Needs Assessment

PUBLIC HEALTH, HEALTHCARE, AND COMMUNITY INDICATORS REVIEWED INCLUDE:

SUBSTANCE USE

Binge Drinking Rate

Drug Overdose Deaths

Opioid Related Inpatient Discharges
by Age Grouping

Opioid Related Inpatient Discharges
by Insurance Type

Opioid Related Emergency Department Visits
by Age Grouping

Opioid Related Emergency Department Visits
by Insurance Type

MENTAL HEALTH

Intentional Self-Harm (Suicide) Rates

Percentage of Adults Reporting Poor Mental
Health on At Least 14 Days in
the Past Month

Mental Health Inpatient Hospitalization

Mental Health Outpatient Utilization by Locale
Utilization of Behavioral Health Urgent Care

SOCIAL DETERMINANTS OF HEALTH

Average Life Expectancy by Zip Code

City of Flint Population

County Population

City of Flint Race & Ethnicity

County Race & Ethnicity

County English Language Limitations

Employment

- Unemployment Rate
- Underemployment Rate
- Total Residents in Labor Force
- Rate of Residents in Labor Force

EDUCATION

- Public School Enrollment
- Rate of Public School Enrollment
- Rate of Preschool Enrollment, Children Age 3-4
- Genesee Fourth-Grade English Language Arts – NOT Proficient
- Flint Fourth-Grade English Language Arts – NOT Proficient
- Genesee Eighth-Grade MSTEP Math – NOT Proficient
- Flint Eighth-Grade Math – NOT Proficient
- Genesee Students Not Graduating On Time
- Flint Students Not Graduating On Time
- Flint Students Identified as Homeless at Any Time During the Year
- Rate of Residents with Bachelor's Degree

INCOME

- Genesee County Poverty Rates
- Flint City Poverty Rates
- Genesee County Median Household Income
- Flint Median Household Income
- Income Inequality
- Genesee Child Poverty, Ages 0-17

- Flint Child Poverty, Ages 0-17
- Genesee Free or Reduced-Price School Lunch
- Flint Free or Reduced-Price School Lunch
- Genesee Young Children Receiving Food Assistance Program (FAP)
- Flint Young Children Receiving FAP

HOUSING

Home Values

Housing Units (Total)

Housing Units (No Vehicle)

Housing Units (No Heating Fuel)

Households with Children

Severe Housing Problems

Homeless Population

Families Assisted with Housing

Shelter Utilization

ENVIRONMENT

Utility Assistance

Medical Transportation Assistance

Non-Medical Transportation Assistance

Literacy

Disability Rate

Hazardous Waste Generated

Air Quality Alert Days

Extreme Heat and Cold Days

Water Pollution

PFA's Sites

Lead Detection in Drinking Water

Leaking Underground Storage Tanks

Park Acreage

CRIME & VIOLENCE

Rates of Violent Crime in County

Rates of Violent Crime in City of Flint

Injury Deaths

HEALTH BEHAVIORS & OBESITY

Number of Residents Reporting No Leisure Time
Physical Activity

Access to Exercise Opportunities

Percentage of Overweight Adults

Percentage of Obese Adults

Food Environment Index

Food Insecurity

Limited Access to Healthy Foods

Residents That Report Tobacco Use

Number of Residents, Businesses, Schools,
and Churches Participating in Commit to Fit
Programming

Seat Belt Usage

HEALTH CARE ACCESS & COVERAGE

Percentage of Residents Uninsured

Number of Medicaid Recipients

- Temporary Assistance for Needy Families (TANF)
- Disabled, Aged, and Blind
- Healthy Michigan
- MiChild
- Flint Medicaid Expansion Waiver

Medicaid Enrollment and Retention Trend

Number of Medicare Recipients

Percentage of Insured Individuals Who Report
Having Unmet Medical Needs in the Last 12 Months

Primary Care Physicians

Specialty Physicians

Total Physicians

Total Active MDs

Total Active DOs

Physician Assistants

Nurse Practitioners

Nurse Midwives

CHRONIC DISEASE & PREVENTION

Age Adjusted Mortality Rates, Total
(Per 100,000 Residents)

- Heart Disease
- Cancer
- Chronic Lower Respiratory Diseases
- Stroke
- Unintentional Injuries
- Diabetes Mellitus
- Alzheimer's Disease
- Pneumonia/Influenza
- Kidney Disease
- COVID-19
- Chronic Liver Disease and Cirrhosis
- All Other Causes

Persistent Asthma Diagnosis

Asthma Medication Management

Diabetes

Cardiovascular Disease

COPD

High Blood Pressure

Stroke

Cancer Incidence

Breast Cancer Screening

Cervical Cancer Screening

Prostate Cancer Screening

Colorectal Cancer Screening

No Dental Visit in Past Year

Communicable Disease Reported

Immunizations Among Adults Aged 65 Years and
Older: Had Flu Vaccine in Past Year

Immunizations Among Adults Aged 65 Years and
Older: Ever Had Pneumonia Vaccine

Medicare Enrollees with Advance Care Planning

MATERNAL/ INFANT HEALTH

Birth Rates (Per 1,000 Residents)

Number of Live Births

Infant Death Rate — County (Total)

Infant Death Rate (African-Americans)

Infant Death Rate (Whites)

Infant Death Rate — Flint (Total)

Infant Death Rate (African-Americans)

Infant Death Rate (Whites)

Infant Death Rate Disparity

Genesee Less Than Adequate Prenatal Care

Flint Less Than Adequate Prenatal Care

Genesee Low-Birthweight Babies

Flint Low-Birthweight Babies

Rate Preterm Births

Birth Defect Cases

Live Births by Weight Gain of Mother

% Gestational Diabetes

% Hypertension

C-Section Rates

CHILD MEASURES

Child Dependency Ratio

Mortality

Leading Causes Hospitalizations

Genesee Child / Teen Death, Ages 1-19

Flint Child / Teen Death, Ages 1-19

Children in Single-Parent Households

Genesee Children in Investigated Families

Flint Children in Investigated Families

Genesee Confirmed Victims of Child Abuse/Neglect

Flint Confirmed Victims of Child Abuse/Neglect

Flint Children in Out-Of-Home Care — Abuse/Neglect

Genesee Births to Teens, Under Age 20

Flint Births to Teens, Under Age 20

Genesee Children Tested for Lead, Ages 1-2

Flint Children Tested for Lead, Ages 1-2

Infant/Child Immunization Rate (Children 19-35 Months Old)

Well Child Visits — First 15 Months of Life

Well Child Visits — Third, Fourth, Fifth, and Sixth Years of Life

Well Child Visits — Adolescents

Number of Enrollees Who Received Weight Assessment and Counseling

Total Number of Inpatient Discharges (Excluding Psychiatric)

Total Number of Inpatient Days (Excluding Psychiatric)

Persistent Asthma — Total Number of Inpatient Discharges (Excluding Psychiatric)

Persistent Asthma — Total Number of Inpatient Days (Excluding Psychiatric)

Total Number of Emergency Room Visits

Total Number of Enrollees with 2 or More ED Visits

Persistent Asthma — Total Number of Emergency Room Visits

Persistent Asthma — Total Number of Enrollees with 2 or More ED Visits

Otitis Media — Total Number of Emergency Room Visits

HEALTH CARE ECONOMIC IMPACT

Total Healthcare Employment

Total Wages (Direct and Indirect Jobs)

Associated Tax Revenue Generated

Total Economic Impact of Health Care Sector

HIV, STI'S, & TEEN PREGNANCY

Chlamydia Rate

Gonorrhea Rate

Teen Pregnancy Rate (Age 15-19)

HIV Testing Among Adults Aged 18-64

HIV Prevalence

HEALTH CARE UTILIZATION (HOSPITALS)

Inpatient Discharges (Total)

Inpatient Days (Total)

Inpatient Revenue (Total)

Inpatient Expenses (Total)

Observations (Total)

Observations Revenue (Total)

Observation Expenses (Total)

Emergency Department Utilization (Total)

ED Revenue (Total)

ED Expenses (Total)

Value of Uncompensated Care

Medicare & Medicaid DSH Funding

Medicare & Medicaid GME Funding

Mission Related Funding Levels: Other State and Local Funding

% Readmissions Within 30 Days — AMI

% Readmissions Within 30 Days — CABG

% Readmissions Within 30 Days — Heart Failure

% Readmissions Within 30 Days — Pneumonia

% Readmissions Within 30 Days — COPD

% Readmissions Within 30 Days — THA/TKA

% Readmissions Within 30 Days — All Conditions

PHYSICIAN/PROVIDER CAPACITY

MDs Age 0-54 (Percentage of Total)

MDs Age 55+ (Percentage of Total)

Total Undergraduates (Primary Care)

Average Number of Undergraduates

Total Post-Graduates (Primary Care)

Total Post-Graduates (Specialty Care)

Total Number of Post-Graduates Who Remain in Genesee County

Total Number of Post-Graduates Who Relocate Somewhere Else in Michigan

Total Number of Post-Graduates Who Relocate Outside of Michigan

HEALTH CARE UTILIZATION (PAYERS)

Total Number of Genesee County Commercial, Medicaid, and Medicare Member Months

Total Number of Genesee County Babies

Total Service Utilization by Genesee County Commercial, Medicaid, and Medicare Enrollees — Inpatient Discharges

Inpatient Days — Total

Average Length of Stay

Non-ER Outpatient Service Utilization

Total Outpatient Service Utilization

Professional Services Utilization by Provider Specialty

Total Service Utilization by Provider Specialty

- Family Medicine
- General Practice
- Internal Medicine
- Cardiology
- Radiology
- Pediatrics
- Physical Medicine & Rehab
- Obstetrics/Gynecology
- Orthopedic Surgery
- Emergency Medicine
- Anesthesiology
- Dermatology
- Ophthalmology
- Surgery
- Social Work
- Pathology
- Urology
- Otolaryngology
- Adult Psychiatry
- Child Psychiatry

Professional Service Utilization by Procedure Type

Total Service Utilization by Procedure Type

- Cardiovascular — Total
- Dialysis — Total
- Immunizations — Total
- Mammography — Total
- Office Visits — Total
- Outpatient Surgery — Total
- Radiology — Total
- Physical Medicine — Total
- Psychiatric — Total
- Well Baby Exams — Total
- C-Sections — Total
- Behavioral Health — Total
- Chiropractic — Total
- Genetic Testing — Total
- Podiatry — Total
- Telehealth — Total

Public Health, Healthcare, and Community Indicators were collected, aggregated, and analyzed to assess trends and inform community health needs. For each metric, state and national comparisons were reviewed to inform need identification. A health need was identified when the community indicator was significantly below comparative norms. Indicators reviewed by GFHC exceed those highlighted in the two-page table above. Not all metrics listed here are in the CHNA document.

Methods and Approach

Following the collection, aggregation, and analysis of more than 500 metrics within the CHNA, the data was then shared strategically through the Greater Flint Health Coalition's established network of collaborative partners. As noted, the GFHC is a multi-sector coalition recognized in Genesee County as the neutral convener of community and population health initiatives. The GFHC regularly convenes residents, subject matter experts, and community/institutional organizations representing multi-sector interests through the engagement of representatives from business, education, public health, physicians, hospitals, health insurers, safety-net providers, community-based organizations, residents, policymakers, foundations, labor, and media. This network of collaborative partners is continuously engaged to review and prioritize the health indicators and needs as detailed in the CHNA.

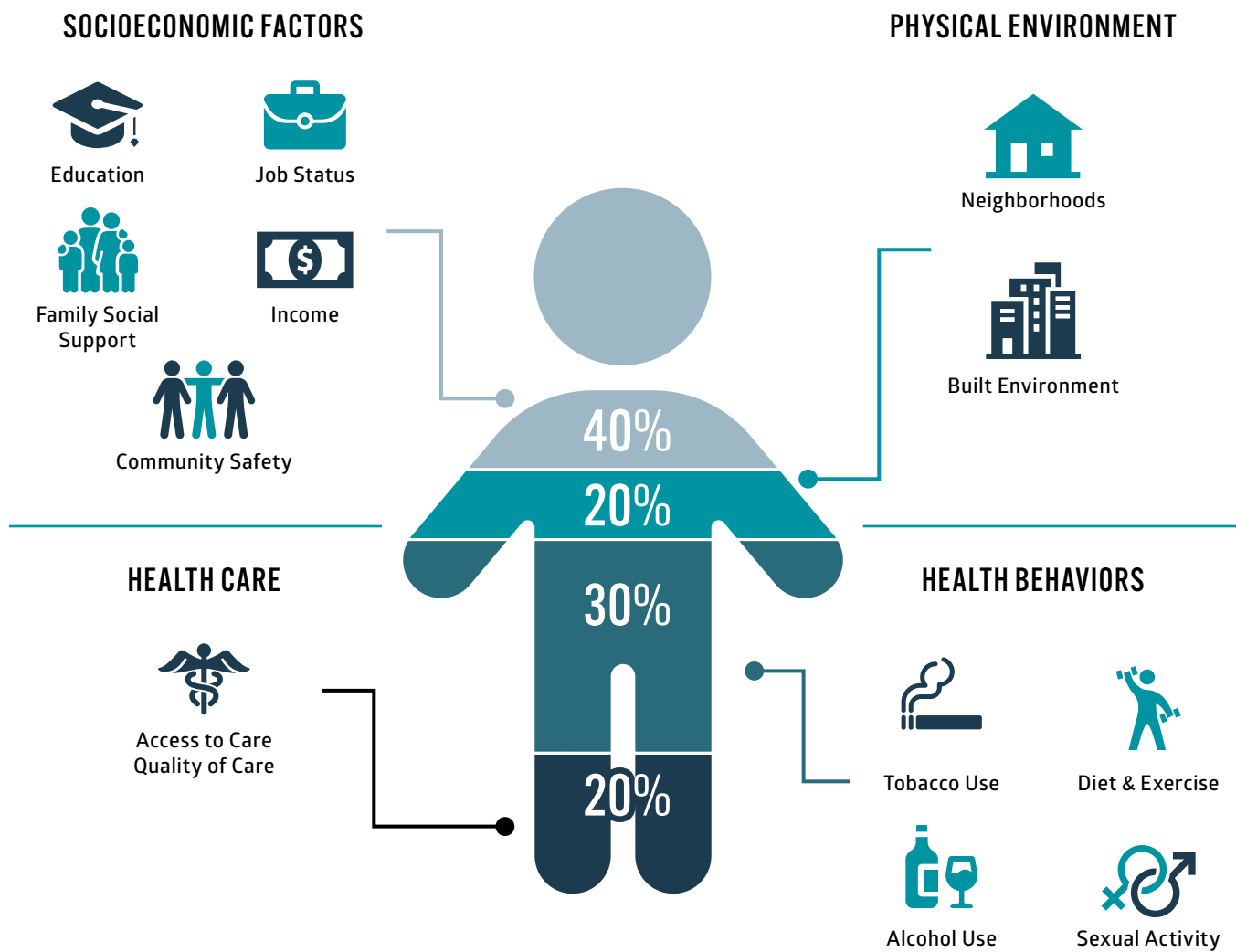
The following entities informed the collection and review of relevant CHNA data, measures, and perspectives:

- Greater Flint Health Coalition's Board of Directors, comprised of 35 executive and community leadership representatives from sectors that include health care, health insurers, government, business, education, organized labor, and the at-large community.
- Greater Flint Health Coalition's established multi-sector Committees and Task Forces that work on various projects and activities within the GFHC focus areas of Access & Environment, Health Improvement, Health Policy, Cost & Resource Planning, Quality & Innovation, Social Determinants of Health and Health Equity. Collectively, these Committees and Task Forces include approximately 300 members who each have special knowledge and subject matter expertise specific to their sector of representation.
- Greater Flint Health Coalition's Community Referral Network, which represents a network of approximately 50 community-based organizations and social service agencies that serve residents, with special emphasis on minority groups, the uninsured, and low-income residents.
- Strategic planning representatives from the 2025 CHNA primary partners, specifically Henry Ford Genesys Hospital, Hurley Medical Center, McLaren Flint, and Greater Flint Health Coalition.
- Greater Flint Health Coalition's Data Review Subcommittee, which includes representatives from the Genesee County Health Department, Blue Cross Blue Shield of Michigan, Meridian Health Plan, McLaren Flint, Hurley Medical Center, Henry Ford Genesys Hospital, Genesee Health System, Molina Healthcare of Michigan, Health Alliance Plan, and Genesee County Osteopathic Society.
- Local government leaders from the city of Flint and Genesee County Board of Commissioners, as well as locally elected representatives to the Michigan State Senate and House of Representatives.
- More than 700 unique community residents surveyed through the CHNA Community Resident Survey.
- More than 200,000 Social Determinants of Health Screening Surveys from Health Plans relevant to developing a broad collection of community informed input.



Factors that Affect Health

Collectively, the sources, indicators, methods, and measures represent the continuum of factors that affect community and personal health.



Source: Institute for Clinical Systems Improvement, Going Beyond Clinical Walls: Solving Complex Problems (October 2014)

IV. Community Health Needs Identified & Assessment Priorities



A consolidated list of priority health needs emerged. The three Genesee County hospitals, the Genesee County Health Department and GFHC leadership convened an ad-hoc Community Health Needs Assessment Workgroup to further analyze and prioritize the needs. Summary data from all sources was aggregated by priority need area and presented to appointed CHNA Subgroup members.

Priorities were reviewed and finalized using the following additional criteria:

- Data trends, with an emphasis on disparities, comparing local, state, and national norms, where possible.
- Resident input on how community, social, and environmental factors affect their health and the health of the community.
- The hospital and health systems' ability to have an impact on community health needs identified.
- Alignment with existing multi-sector efforts focusing on the same service area, population, and priorities.
- Current hospital and GFHC community priorities and programs.
- Effectiveness of existing programs and a gap analysis of where additional efforts are needed.
- How the GFHC and its partners responded to identified community health needs in the past.

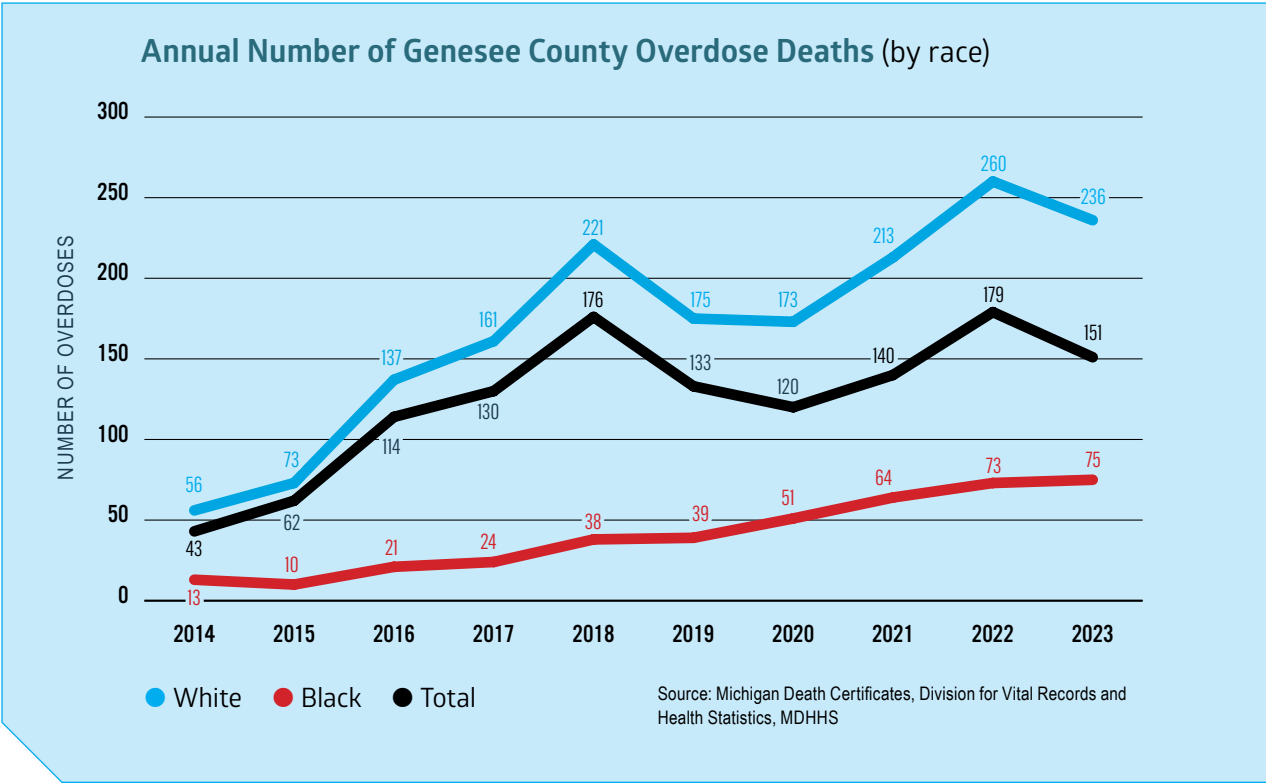
Once priorities were identified, the CHNA was subject to a multi-level review process including approval by the Greater Flint Health Coalition's Board of Directors and each hospital's Board.

Substance Use

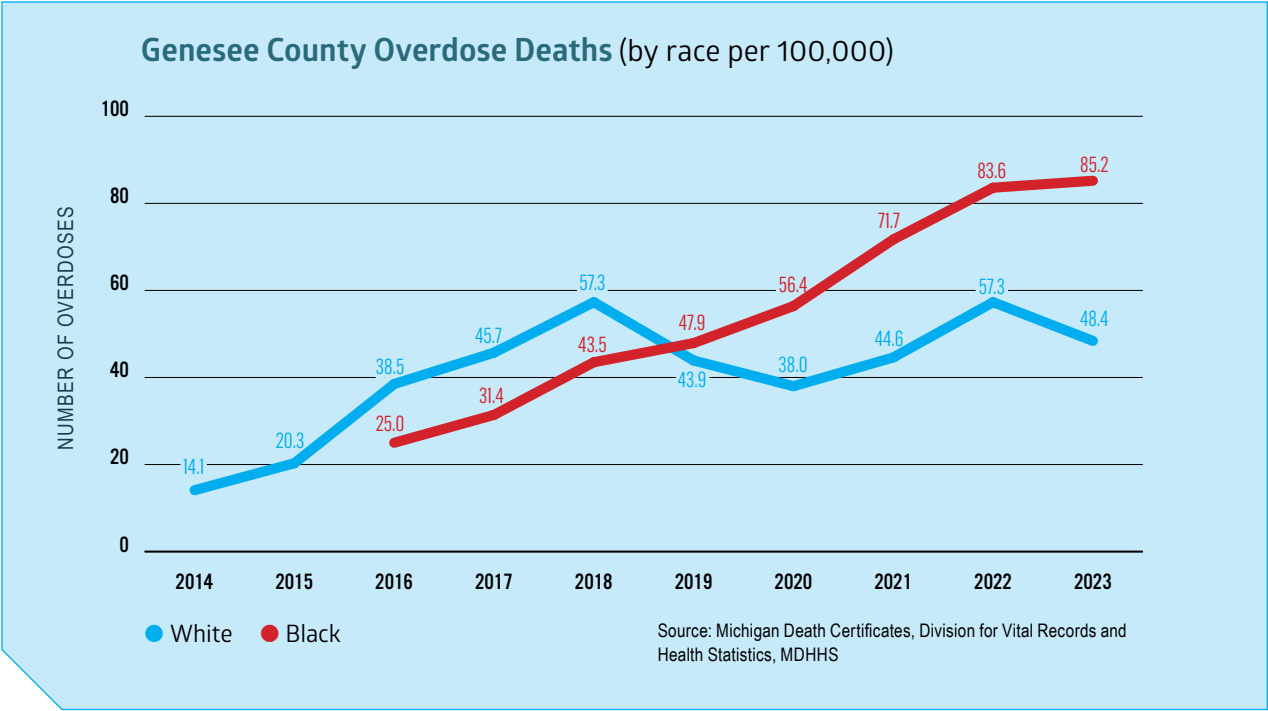
Substance use is an ongoing health behavior that contributes to poor health status, poor health outcomes, and increased morbidity and mortality. Like many communities across the United States, Genesee County is continuing to experience an opioid epidemic. The Genesee County drug-induced crude mortality rate is 61.2 per 100,000, which has increased 28.03% since 2021 and is twice as high as the overall state of Michigan rate.

Substance Use	2020	2021	2022
<i>Drug-induced Crude Mortality Rate (per 100,000, 3 year average)</i>			
Genesee County	47.8	51.6	61.2
Michigan	29.2	31.5	30.6

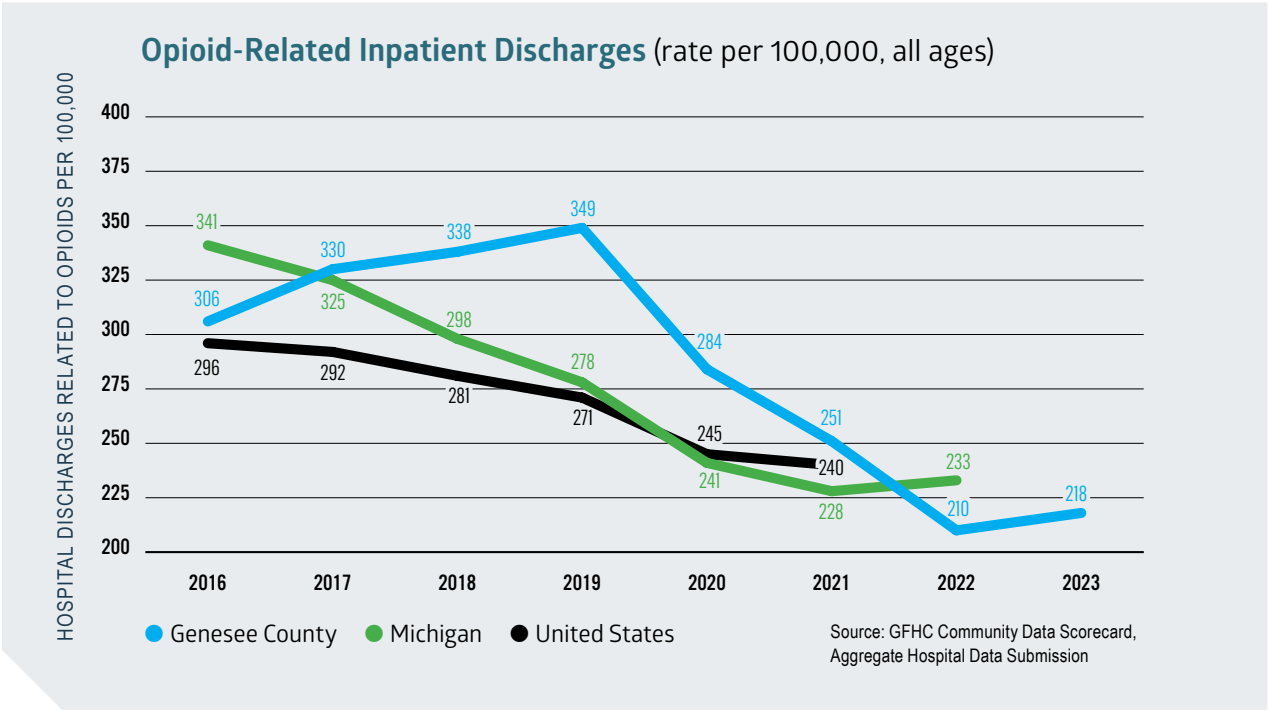
When examining Genesee County overdose data by race, the total number of overdose deaths declined from a high of 260 in 2022 to 236 in 2023, a decrease of almost 10% as demonstrated in the graph below. The number of overdose deaths for White residents decreased in 2023, while the steady increase of Black residents continued.



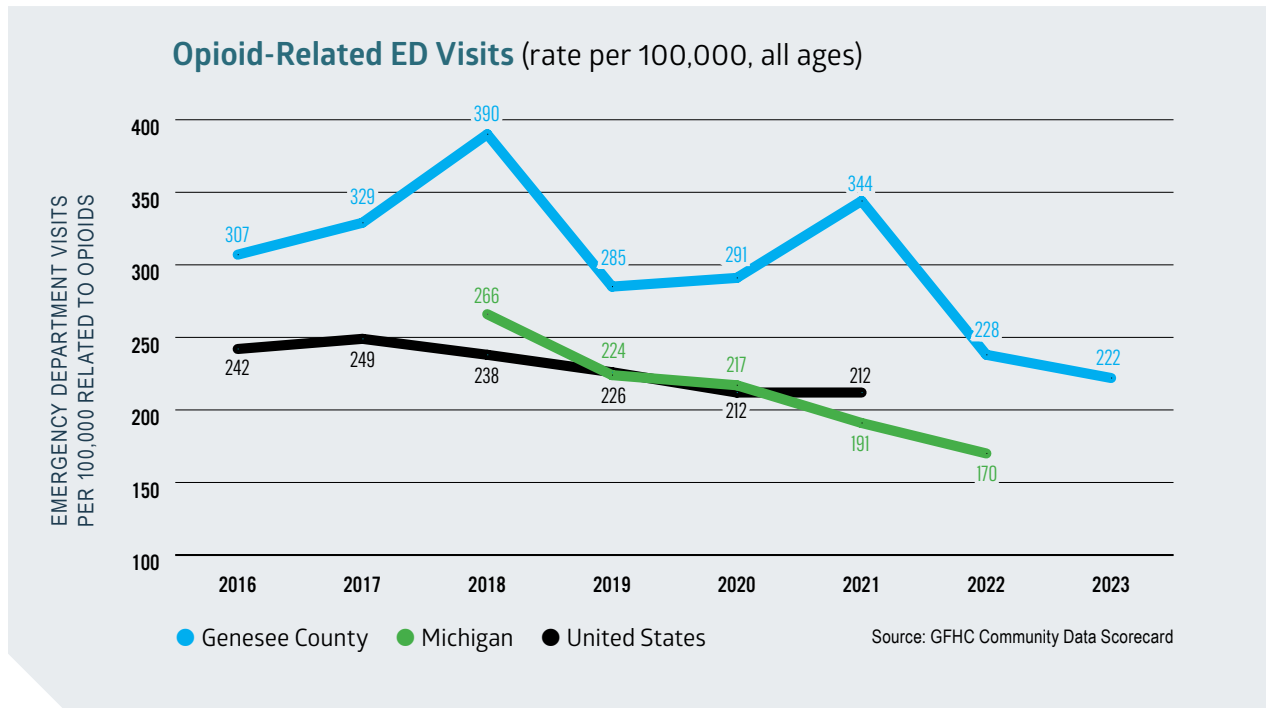
The graph below represents Genesee County’s overdose death rate by race. The disparity between the overdose death rates for Black and White residents grew again in 2023, with the overdose death rate for Black residents being almost twice the rate for White residents.



Opioid related inpatient hospital use is decreasing in Genesee County. Data collected via the Greater Flint Health Coalition’s Mental Health & Substance Use Task Force from Genesee County’s three hospital systems indicates that inpatient hospitalizations related to opioid use have decreased 37% since its height in 2019.



Opioid related Emergency Department utilization for all ages is decreasing, despite an uptick in 2021. Genesee County's opioid-related ED Visits rate per 100,000 is nearly 30% higher than the state of Michigan. Although a variety of state policy initiatives and community-based interventions have been established to address the issue of substance use.



Community Response:

When Genesee County residents were asked via the 2025 CHNA Community Resident Survey to identify the three most important health problems, 62% of them identified substance use as one of the top three. When asked about the top three risky behaviors, 55% identified drug abuse while 35% identified alcohol abuse.

Mental Health

Good mental health is associated with good physical health. In Genesee County, 20.5% of residents report having more than 14 poor mental health days in the past month per the Behavioral Health Risk Factor Surveillance System (BRFSS), higher than both the statewide and national rates.

Mental Health	2020	2021	2022	2023
---------------	------	------	------	------

Adults self-reporting more than 14 days within the last 30 where their mental health was not good (3 yr avg)

Genesee County	19.5%	16.7%	20.3%	20.5%
Michigan	15.4%	15.2%	16.0%	16.4%

The results of over 200,000 Social Determinants of Health (SDOH) Surveys completed between 2022-2024 by Genesee County residents via their Health Plans also demonstrated mental health related needs. Genesee County residents indicated stress (15%), anxiety (11%) and depression (10%) as their top three SDOH needs.

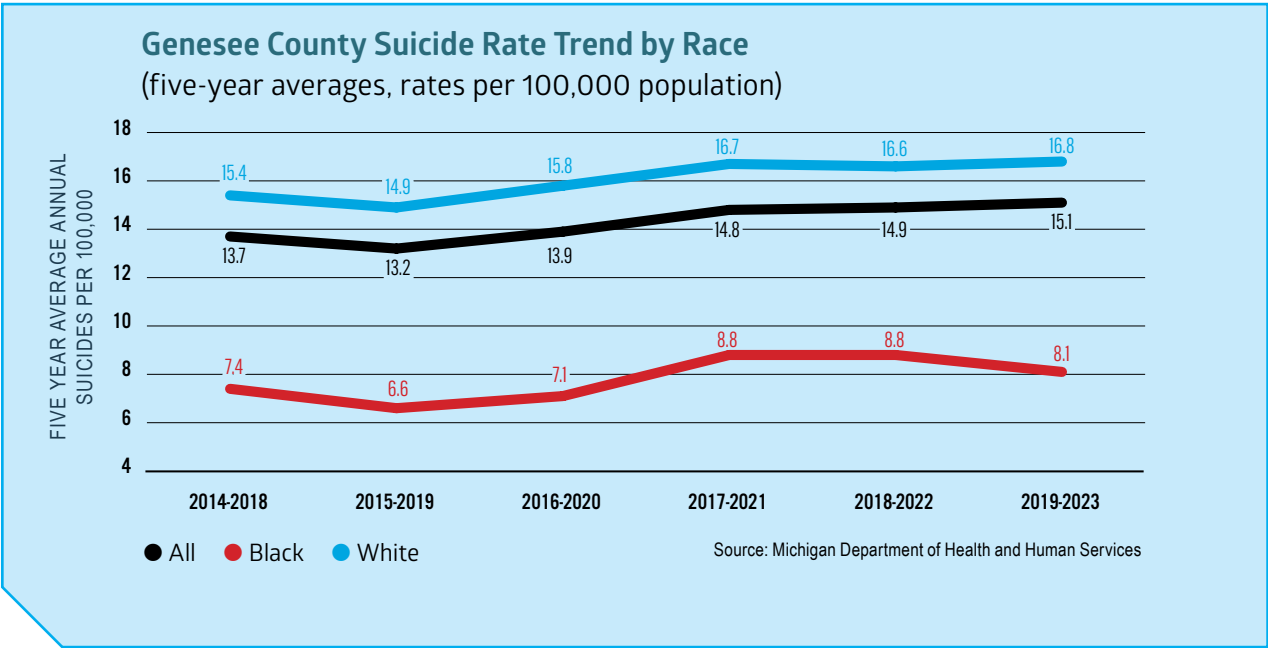
Suicide is another area of concern within the mental health category. According to the Michigan Department of Health and Human Services, within Genesee County the rate of suicide per 100,000 is similar to the rates for Michigan and the United States. It is the 10th leading cause of death but the 2nd leading cause of death for individuals 10-34 years old. Additionally, data from the most recent Genesee Consortium Youth Risk Behavior survey has indicated 23.2% of students seriously considered attempting suicide during the 12 months leading up to the survey.

According to the Michigan Department of Health and Human Services, there is a disparity in suicide rates per 100,000, with White residents having a rate of 16.8 per 100,000 whereas Black residents have a rate of 8.1 per 100,000.

Percentage of students who seriously considered attempting suicide during the 12 months before the survey

2019	21.0%
2021	23.7%
2023	23.2%

While the total number of surveys is unavailable and therefore it can not be determined if these numbers are statistically significant, given the topic area it was deemed important to include this information and explore further.



Mental Health needs are clearly documented for residents of Genesee County, especially those in the city of Flint — who are still dealing with the community-wide trauma experienced as a result of the Flint Water Crisis. To help address these needs, in 2021, Genesee County passed a Mental Health Millage in an effort to serve those who are in need of mental health resources and support.

Community Response:

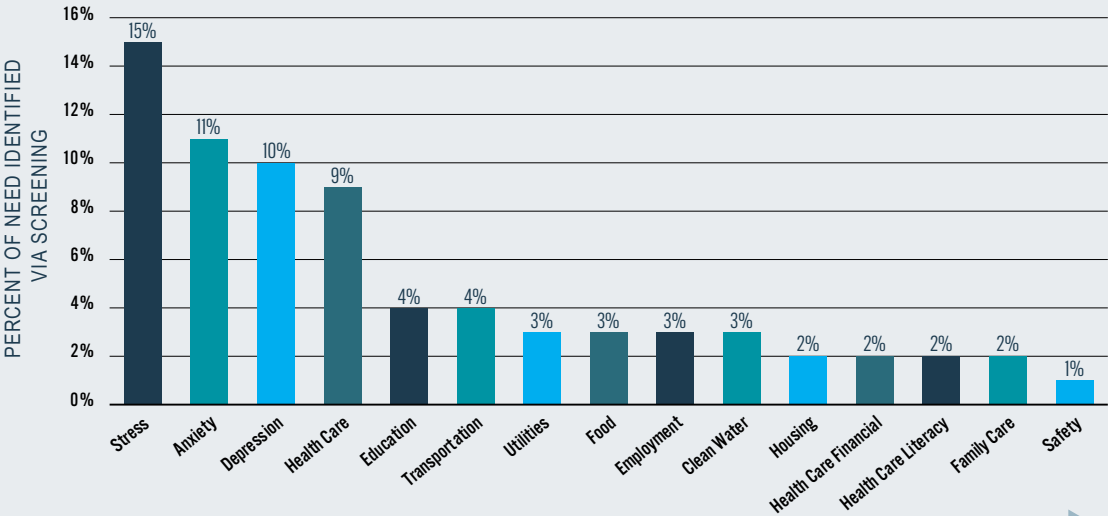
Mental health was identified by community residents completing the 2025 CHNA Community Resident Survey as the second most important health problem in the community, as 40% of respondents to the survey question identified “Access to mental and behavioral health services” as one of their top three health problems.

Social Determinants of Health

According to the Robert Wood Johnson Foundation, 80% of the factors impacting health outcomes fall outside traditional healthcare delivery. When these social determinants of health (SDOH) needs are not met, more serious health concerns may emerge, while existing conditions are often left untreated or undiagnosed. The social needs in Genesee County are so significant that those chosen have the most far reaching implications on the health of the community. These were also identified by residents themselves. The 2025 CHNA Community Member & Stakeholder surveys were distributed to over 700 community residents representing all Genesee County zip codes and an additional 100 “stakeholders” which were defined as healthcare executives or managers as well as members of various leadership committees within the major health care institutions. Residents were asked to identify the top healthcare, environmental, and socioeconomic concerns in Genesee County.

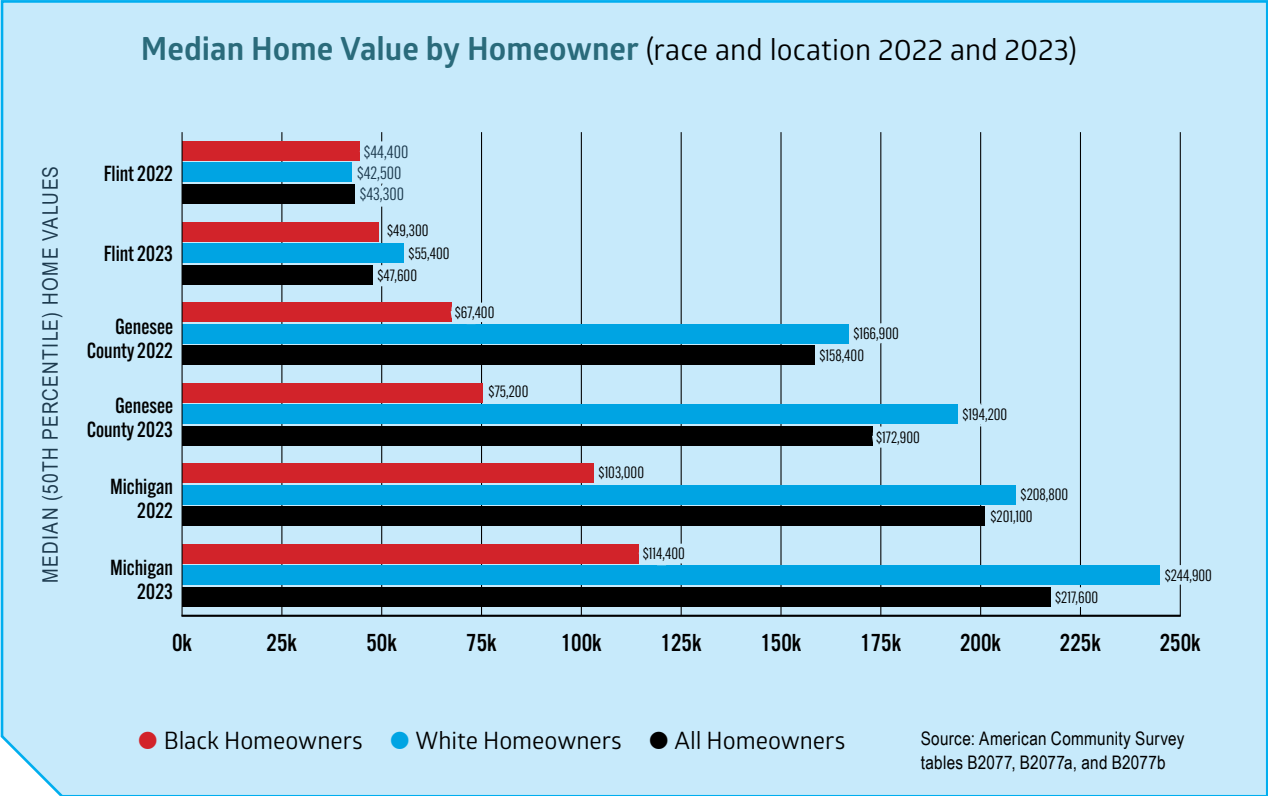
Additionally, as part of the ongoing Mid-Michigan Community Health Access Program, an initiative of the Greater Flint Health Coalition, there has been a community-wide SDOH screening in Genesee County since 2017. SDOH screening questions cover domains including food, utilities, housing, healthcare access, safety, substance use, depression, water, child care, education, employment, stress, anxiety, and transportation (medical and non-medical). Patients were asked to identify areas where they had a need, as well as provided an opportunity to indicate if they desired assistance or support getting connected to a community resource to address an indicated need.

SDOH Screening Needs Identified by 2022-2024 Health Plan Beneficiaries (n=210,395)



Housing

Housing is a critical social determinant of health, with affordable, safe, and stable housing directly impacting both the physical and mental well-being of Genesee County residents. In the 2025 Community Survey, housing consistently stood out as a priority for residents. Genesee County has seen an increase in home values over time, however, there is a disparity in home values and race, as demonstrated in the chart below.



Though median home values are increasing, a lack of safe and affordable housing is a problem locally and nationwide. The tables below demonstrate Cost Burdened Occupied Housing Units, which is when more than 30% of its income is spent on housing as well as Severe Cost Burdened Occupied Housing Units, which is when more than 50% of its income is spent on housing.

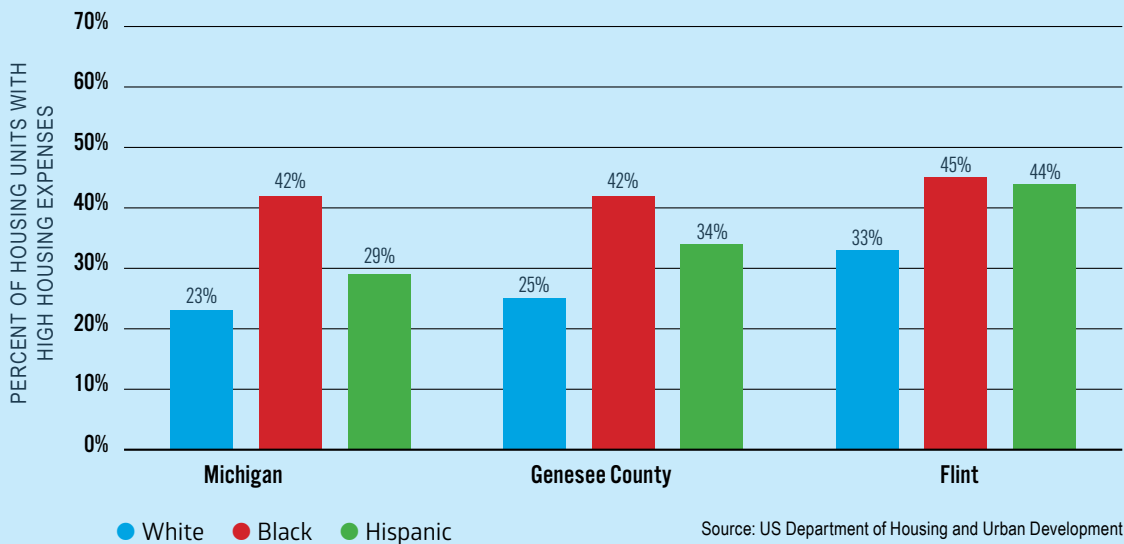
Percentage Cost Burdened Occupied Housing Units — More 30% of income spent on housing	2017-2021
Flint	38.1%
Genesee County	27.3%
Percentage Severely Cost Burdened Occupied Housing Units — More 50% of income spent on housing	2017-2021
Flint	19.6%
Genesee County	12.6%

Source: U.S. Department of Housing and Urban Development (HUD) Comprehensive Housing Affordability Strategy (CHAS) database

Cost Burden and Severe Cost Burden can also be demonstrated by the variances between racial groups in Flint, Genesee County, and Michigan.

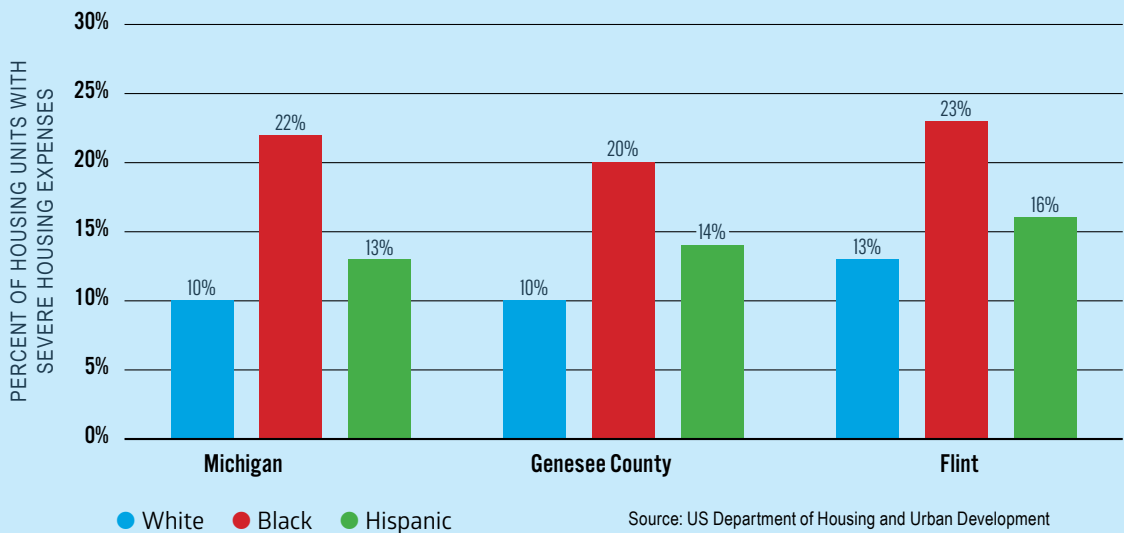
Rate of High Housing Cost Burden by Race and Location

Occupied housing units spending more than 30% on housing expenses



Rate of Severe Housing Cost Burden by Race and Location

Occupied housing units spending more than 50% on housing expenses



Along with cost-burden, substandard housing (i.e. poor condition) and housing with severe problems (e.g. lack of complete plumbing or kitchen facilities) are prevalent in Flint and Genesee County.

Substandard Housing	2017-2021
Flint	13,305
Genesee County	46,565

Source: US Department of Housing and Urban Development

Housing with Severe Problems	2017-2021
Flint	7,380
Genesee County	23,275

Source: US Department of Housing and Urban Development

Housing that is both safe and affordable is hard to come by for most low-income residents. In areas of Genesee County outside the city of Flint, an even greater shortage of affordable housing exists, resulting in the county’s lowest income residents concentrated in urban areas.

Another shortage area is seen in both quality and supply of permanent supportive housing for residents with developmental or intellectual disabilities, those who are mentally ill, at-risk youth, the elderly, victims of domestic violence, and persons with HIV/AIDS. Housing supply for these groups is very limited and programs are often administered by non-profit agencies which are overburdened and consistently operating with inadequate funding for service-delivery to meet demand.

Homelessness	2020	2021	2022	2023	2024
Point in Time Homelessness Count	242	264	299	326	351

Source: US Department of Housing and Urban Development

Community Response:

When asked via the 2025 CHNA Community Resident Survey about the three most important environmental factors for a healthy community, 66% of residents identified safe and affordable housing.

Employment

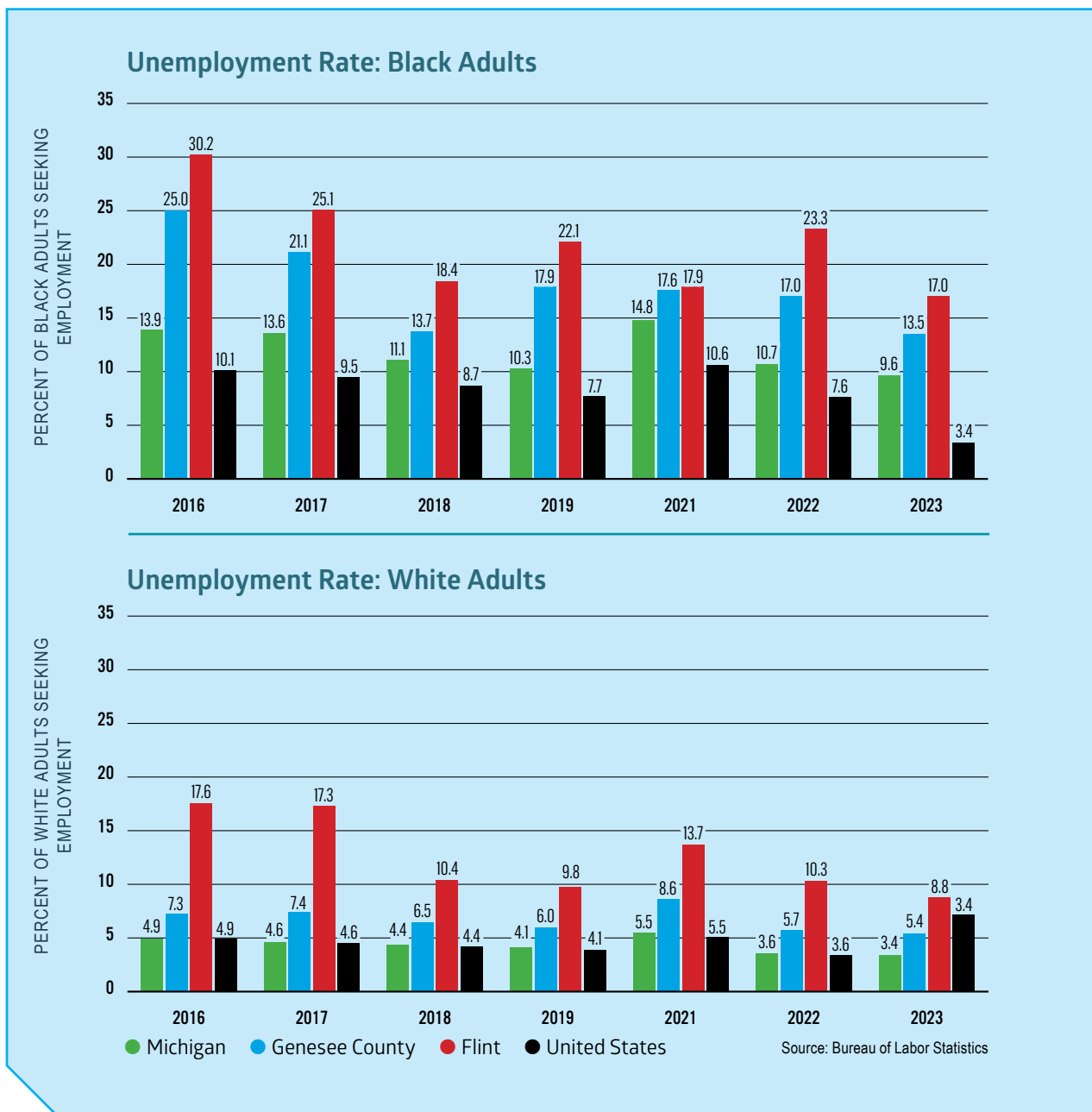
Unemployment has declined significantly over the last decade, with Genesee County and Flint experiencing unemployment rates only slightly higher than the national average.

Annual Average Unemployment Rate

2023

Genesee County	5.0%
Flint	5.0%

However, when examining unemployment rates by race, there is a clear disparity with black adults experiencing an unemployment rate of 17.0 whereas white adults have a rate of 8.8.



Earning a living wage directly impacts every part of an individual’s quality life and their health outcomes. Genesee County’s median household annual income is \$60,027, whereas the city of Flint has a median household annual income of \$33,141, which is significantly lower than the state of Michigan (\$69,183) and the United States (\$77,719).

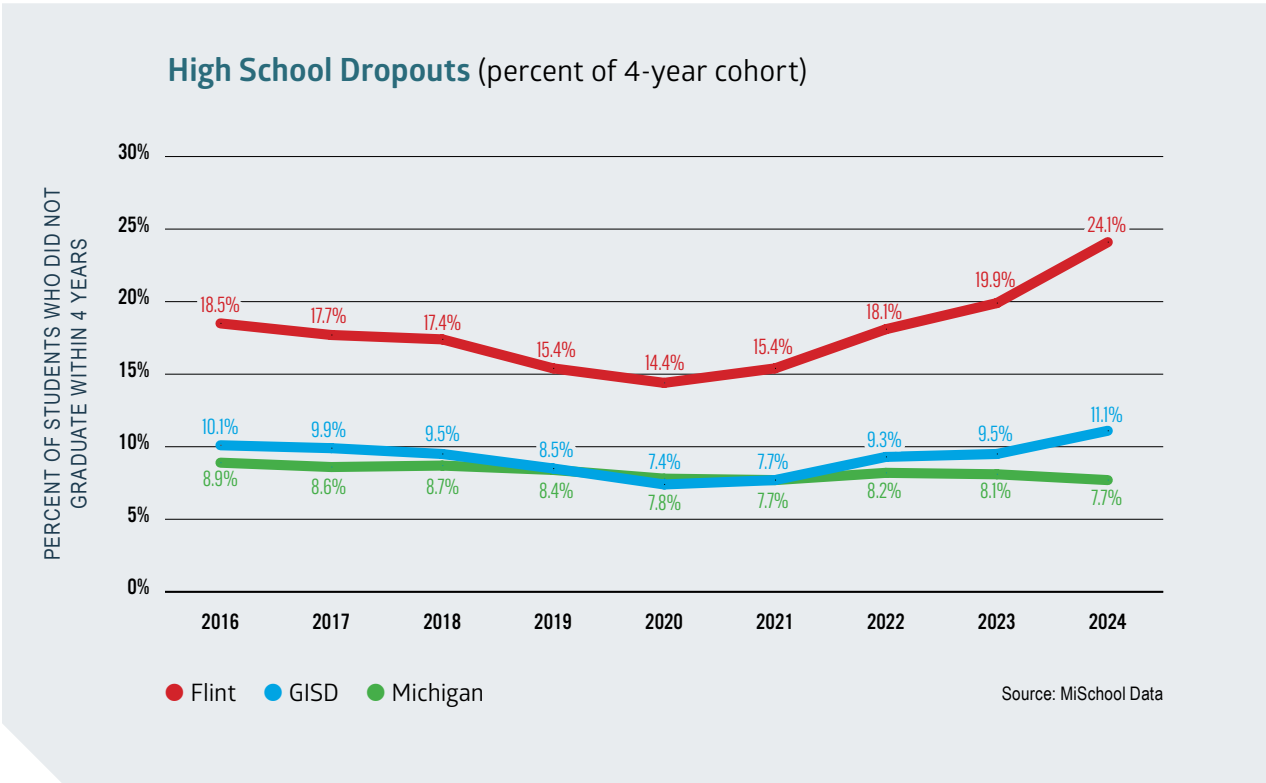
Community Response:

When the 2025 CHNA Community Resident Survey asked community members to identify the top three factors of a healthy community, “good jobs and a healthy economy” received the third highest rate of responses overall with 34%.

Education

A quality education system is critical to the health of a community. Educational achievement is strongly associated with better health outcomes including lower rates of chronic disease and improvement in mental well-being.

The chart below shows that since 2020, Flint Community Schools and the Genesee Intermediate School District have seen an increase in high school dropouts.



Though having experienced a slight increase in dropouts, as of 2023, Genesee County is still experiencing a graduation rate of 80%, which is only slightly lower than the state of Michigan at 81.8%. However, Flint Community School saw a significant decrease from its 2020 graduation rate of 52.3%, with only a 35% graduation rate in 2023.

High School Graduation Rates

	2020	2023
Flint	52.3%	35.0%
Genesee County	79.7%	80.0%
Michigan	82.1%	81.8%

Source: Mi School Data

Genesee County lags behind the state average as well as comparison communities in 8th Grade Math and 4th Grade English Language Arts Proficiencies according to the Preliminary Standardized Assessment Test (PSAT) and the Michigan Student Test of Education Progress (M-STEP) respectively. Educational proficiency for students in the Flint Community Schools is far lower, with nearly 86% of all 8th grade students lacking proficiency in math and almost 80% of 4th grade students lacking proficiency in English/language arts.

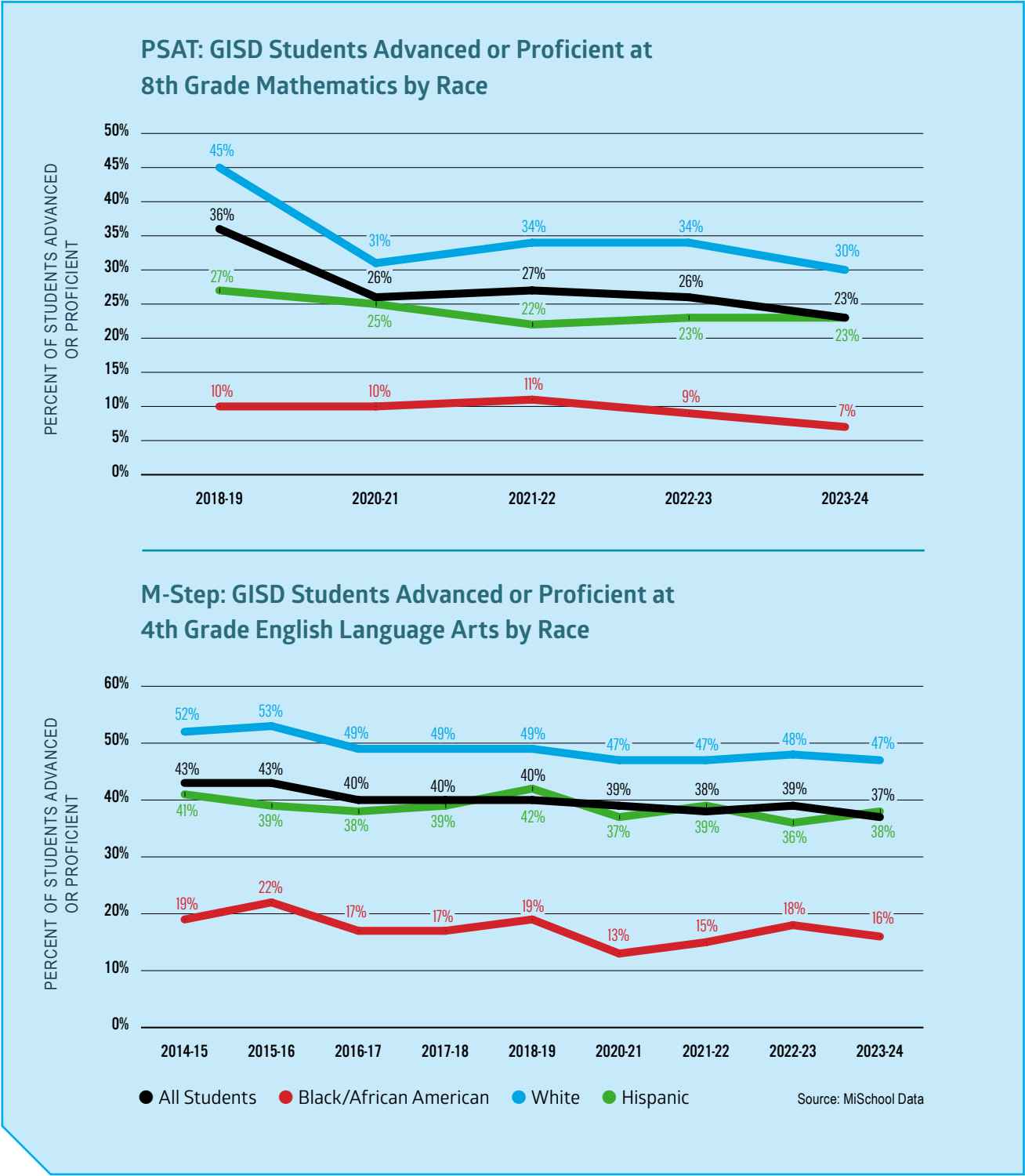
PSAT: Students Proficient or Advanced in Grade 8 Math

	2024
Flint	13.8%
Genesee County	27.0%
Michigan	33.7%

Students Not Proficient in Grade 4 English & Language Arts (M-STEP)

Flint	78.3%
Genesee County	62.0%
Michigan	56.4%

The graphs below also demonstrate the disparity between races for both the PSAT and M-STEP.



Additionally, a large disparity continues to exist in Bachelor’s Degree attainment between Flint, Genesee County, the state of Michigan, and the United States. While all have slightly improved over the course of the last three years, with state and national Bachelor’s Degree attainment at 32.7% and 36.2% respectively, the comparative rates for Flint (13.2%) and Genesee County (22.8%) continue to lag behind. Levels of attainment in the city of Flint are nearly half the county rate and a third of the national norm.

Rate of Residents with Bachelor's Degree (or higher)

Flint	13.2%
Genesee County	22.8%
Michigan	32.7%
United States	36.2%

U.S. Census Bureau, American Community Survey, 2023

Community Response:

When Genesee County residents were asked via the 2025 CHNA Community Resident Survey to identify the three most important factors for a healthy community, 16% identified good schools. When asked about the three most important socioeconomic factors impacting the community, 18% cited education attainment.

Food Insecurity

Food insecurity is when people can't access the food they need to live active and healthy lives. Between 2019 and 2022, Genesee County, Michigan, and the United States have all seen an increase in both the food insecurity rate and the child food insecurity rate.

SDOH Food Insecurity

	2019	2022
Food Insecurity Rate		
Genesee County	15.2%	16.0%
Michigan	13.0%	14.2%
United States	10.9%	13.5%

Child Food Insecurity Rate

Genesee County	19.4%	23.7%
Michigan	14.2%	17.9%
United States	14.6%	18.5%

Source: Feeding America

There has also been a 9% increase in the percentage of Genesee County residents receiving SNAP benefits since 2019 for a total of 20.5%.

Percentage of Population Receiving SNAP Benefits	2019	2022
Genesee County	18.8%	20.5%
Michigan	12.4%	14.0%
United States	11.7%	12.7%

There has also been a slight increase in Genesee County children eligible for free or reduced lunch, for a total of 63.3%, which is higher than Michigan at 53.3%.

Children Eligible for Free/Reduced Price Lunch	2019	2022
Genesee County	59.2%	63.3%
Michigan	50.5%	53.3%
United States	52.1%	53.5%

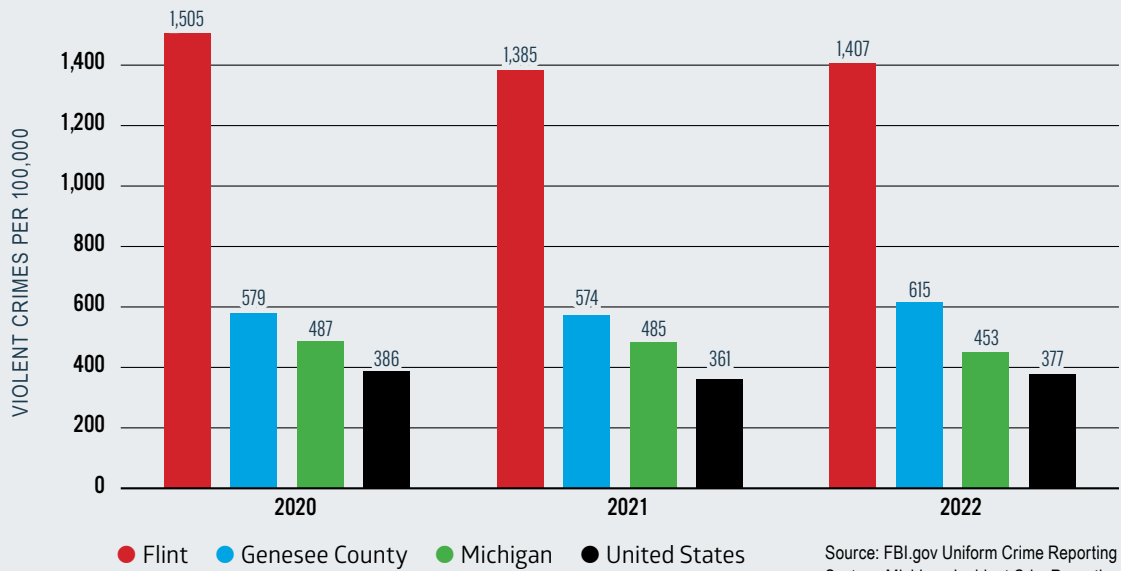
Community Response:

Healthy Food Access received the third highest rate of response when Genesee County residents were asked via the 2025 CHNA Community Resident Survey to identify the top environmental concerns impacting the community with 44% of respondents citing it as one of their top concerns.

Safety & Violence

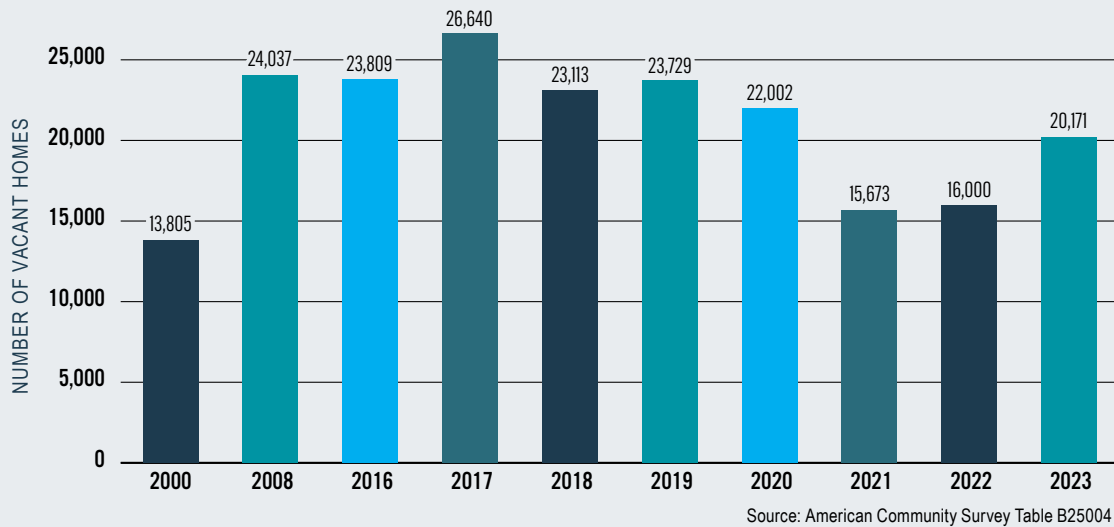
Safety and violence were both priorities demonstrated via the 2025 CHNA Community Resident survey as well as the corresponding data. Rates of violent crime are significantly higher in the city of Flint at (1,407 per 100,000) compared to Genesee County (615 per 100,000) and the state of Michigan (452.9 per 100,000). The homicide firearm death rate per 1,000 residents is 0.15 in Genesee County, nearly twice as high as the state of Michigan at 0.08. In 2022, the city of Flint received a five-year, Community-Based Violence Intervention and Prevention Initiative (CVIPI) Grant to implement evidence-based strategies to reduce and prevent violent crime in collaboration with community partners.

Rates of Violent Crime (per 100,000 residents)



A component of safety, blight is a major concern of many residents, especially within the city of Flint. Not only does blight lead to perceptions that make residents feel unsafe in their own neighborhood, but neighborhoods with a higher percentage of vacant homes are likely to attract higher rates of crime. In an effort to address community blight, the Genesee County Land Bank has secured \$52 million to demolish up to 2,000 blighted structures in Flint and Genesee County.

Vacant Homes (Genesee County)



Community Response:

When the 2025 CHNA Community Resident Survey asked “What do you think are the three most important factors for a healthy community”, approximately 31% of respondents identified low crime and safe neighborhoods. Also, 23.34% identified gun violence as an important health issue in our community.

Environment

An individual's zip code is often a stronger predictor of their health than their genetics; this is mainly due to factors like healthcare access, economic stability, and various environmental factors. Within Genesee County, there is a significant disparity in life expectancy based upon one's zip code.

	2000-2001	2007-2009	2011-2013	2013-2015	2015-2017	2017-2019	2018-2020	2019-2021	2020-2022	Trend
48505 - Flint	67.9	67.7	70.2	69.7	68.9	68.9	67.1	65.1	63.8	▼
48504 - Flint	72.3	71.9	72.8	67.5	72.4	71.6	70.1	66.1	65.5	▼
48506 - Flint	71.9	72.6	74.3	73.4	72.7	72.6	72.0	69.0	68.0	▼
48458 - Mt. Morris	73.4	74.6	76.0	74.2	72.7	73.1	72.1	68.2	68.2	●
48503 - Flint	73.4	74.8	74.7	76.7	74.3	73.0	72.9	70.7	69.4	▼
48507 - Flint	75.0	75.2	74.7	75.1	73.9	73.6	72.6	70.0	69.9	▼
48432 - Flint	76.7	76.4	75.3	75.4	74.4	73.1	72.3	70.4	71.1	▲
48529 - Burton	73.4	71.6	74.0	70.4	70.8	71.1	70.8	67.4	71.3	▲
48519 - Burton	75.6	76.9	75.8	74.9	72.9	72.5	71.1	70.4	71.3	▲
48463 - Otisville	74.6	75.7	75.4	74.6	74.3	75.4	75.9	72.3	72.7	▲
48509 - Burton	76.3	72.2	77.4	77.2	75.6	73.3	73.2	71.7	72.8	▲
48420 - Clio	76.9	78.2	77.5	78.3	76.1	76.7	73.9	73.9	73.7	▼
48423 - Davison	76.4	78.3	79.1	78.5	77.8	77.0	76.5	74.6	75.7	▲
48473 - Swartz Creek	76.6	78.7	79.7	78.6	78.2	78.1	78.0	75.7	76.8	▲
48433 - Flushing	78.5	81.3	80.9	79.2	78.7	78.9	78.4	76.8	77.2	▲
48457 - Montrose	78.8	81.3	81.0	79.1	77.9	76.9	77.7	75.4	77.5	▲
48438 - Goodrich	74.5	82.0	79.8	81.3	78.7	80.0	79.1	76.5	77.5	▲
48451 - Linden	76.9	80.7	79.2	80.4	78.9	76.7	76.8	75.3	77.7	▲
48439 - Grand Blanc	77.6	80.5	81.4	80.3	79.1	79.7	79.2	76.9	79.0	▲
48430 - Fenton	80.4	82.6	85.0	83.1	83.3	82.3	82.1	80.4	83.2	▲
Genesee County Overall	75.4	76.7	77.2	76.4	76.1	76.6	74.6	72.6	73.5	▲
Largest Disparity	12.5 years	14.9 years	14.8 years	15.6 years	14.4 years	13.4 years	15.0 years	15.3 years	19.4 years	▼

Another environmental factor that plays a significant role in health, especially for the residents of the city of Flint, is safe and affordable water. In the years since the onset of the Flint Water Crisis, much work has been undertaken to make the city’s water supply safe to drink and to mitigate the effects of residents’ exposure to lead and other contaminants. The city’s water system has tested below action levels for the state’s lead and copper rule for 12 consecutive monitoring periods since July 2016. Flint’s testing results can be found on the state of Michigan’s website (<https://www.michigan.gov/flintwater/sampling/monitoring>). In May 2025, the Environmental Protection Agency lifted a 2016 emergency order on Flint’s drinking water, indicating the city of Flint has completed all requirements of the 2016 EPA Safe Drinking Water Act. Although the emergency order has been lifted, many residents still do not trust the water.

Safety is coupled with the affordability of accessing the Flint Water System itself. Flint has some of the highest water costs in the nation. This is an ongoing issue that needs to be addressed not only in the city of Flint, but across the United States.

Poverty

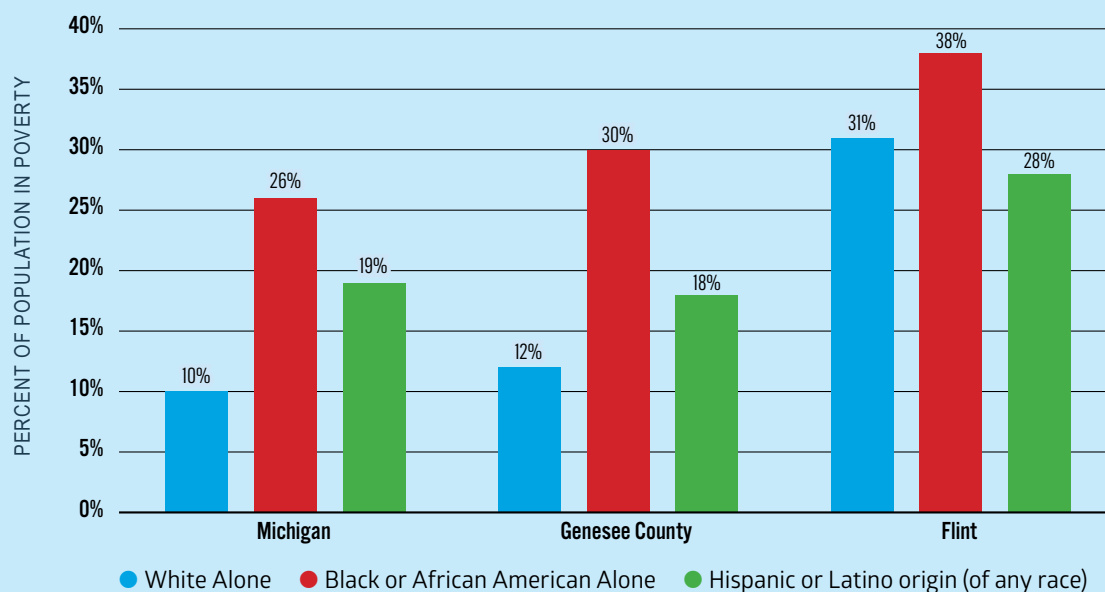
Poverty is the overarching social condition that impacts every facet of an individual’s life and hinders a community’s ability to achieve forward momentum. Most of the social determinant of health issues listed above are a direct result of poverty, which is why low-income individuals face such tremendous barriers to achieving positive health outcomes. As home to one of the most impoverished cities in the nation, few communities illustrate this more clearly than Genesee County.

SDOH Poverty Rates	2023
Flint	40.7%
Genesee County	18.0%
Michigan	13.5%
United States	12.5%

The majority of Genesee County’s lowest income households are concentrated in the city of Flint where 40.7% of all residents are living below the Federal Poverty Line (FPL), which is much higher than Genesee County (18%) and the state of Michigan (12.5%). There is also a significant disparity by race: Black and Hispanic residents have consistently higher rates of poverty in Genesee County and Michigan. However, it is important to note that the poverty rates are similar within the city of Flint amongst races.



Poverty Rate by Race: 2023



A devastating number of children under the age of five in Flint (61.9%) live in poverty. This is more than twice the rate for Genesee County (26.4%) and nearly three times the national rate (16.8%). Income disparities not only exist geographically, but also between ethnicities, as minority children experience poverty at rates twice that of white children according to the U.S. Census Bureau.

When examining poverty rates in Flint and Genesee County, it is important to consider a segment of the population referred to Asset Limited, Income Constrained, Employed (ALICE). It represents a group of people who do not qualify as being in poverty, but whose incomes are below what is needed for basic life needs. This group is sometimes called “the working poor.”

Year	Flint	Genesee County	Michigan
2019	63.8%	40.2%	38.1%
2021	59.8%	42.4%	39.0%
2022	67.4%	44.1%	41.2%

Source: UnitedforAlice.org

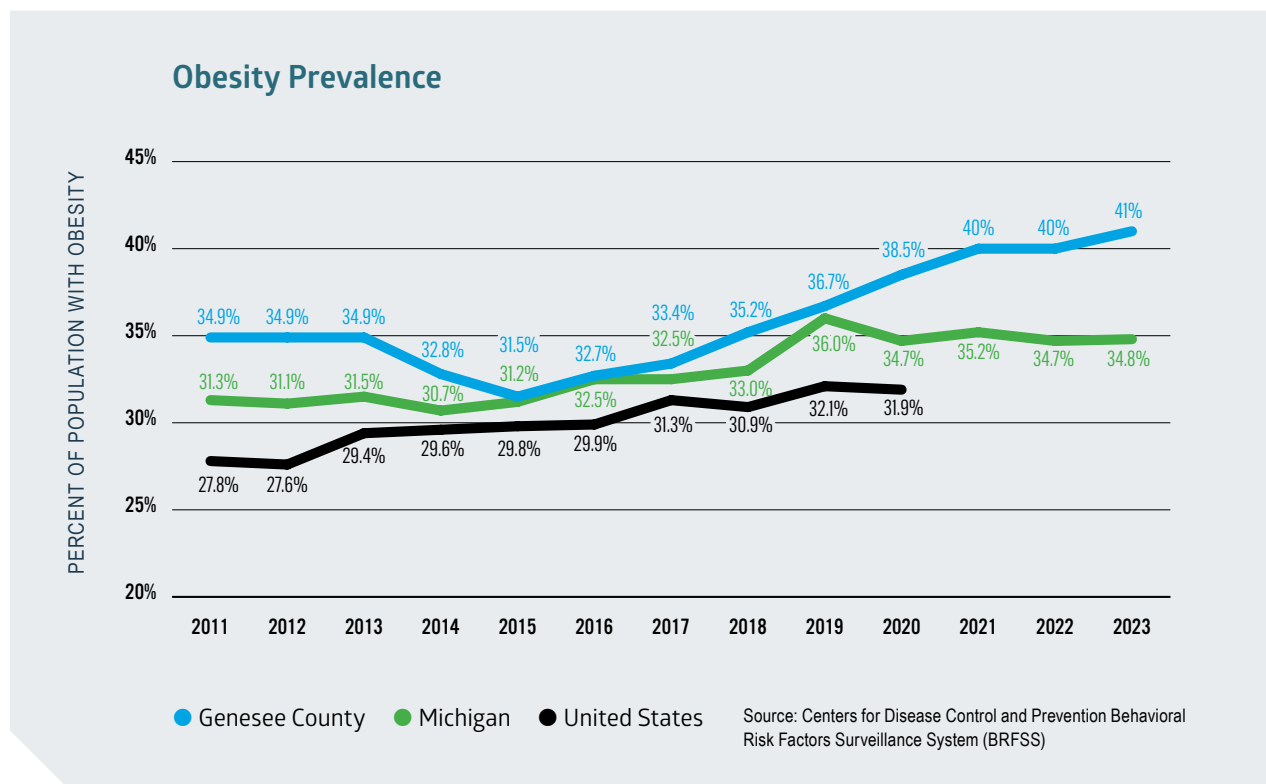
Without a massive influx of community investment or new livable wage jobs, poverty cannot be solved overnight. It is essential that systems begin to focus on the documented social determinants of health needs of residents and recognize their impact on residents' health outcomes. Without addressing these root causes health outcomes will remain poor as demonstrated in Flint and Genesee County. Fortunately, many community-based initiatives and interventions, such as Rx Kids (nation's first-ever community-wide prenatal and infant cash prescription program), are being implemented to address these needs.

Community Response:

In the 2025 CHNA Community Resident Survey, when Genesee County residents were asked to identify the top three socioeconomic factors that impacted the community, 41% cited poverty/working poor, followed by basic needs (39%), and income/wealth distribution (25%).

Obesity and Healthy Behaviors

Genesee County's health behaviors are some of the poorest in the state. Health behaviors are associated with a combination of physical activity, food and nutrition, smoking rates, alcohol use, access to exercise opportunities, healthy sexuality, and more. Genesee County's obesity rate is significantly higher than state and national averages at 41%.



The combined obesity and overweight rate for Genesee County is 72.3%. As illustrated in the above graph, obesity prevalence has been trending upward over the last eight years.

Obesity + Overweight (% self-reported)

Genesee County	72.3%
Michigan	68.3%

Source: Centers for Disease Control and Prevention Behavioral Risk Factors Surveillance System (BRFSS)

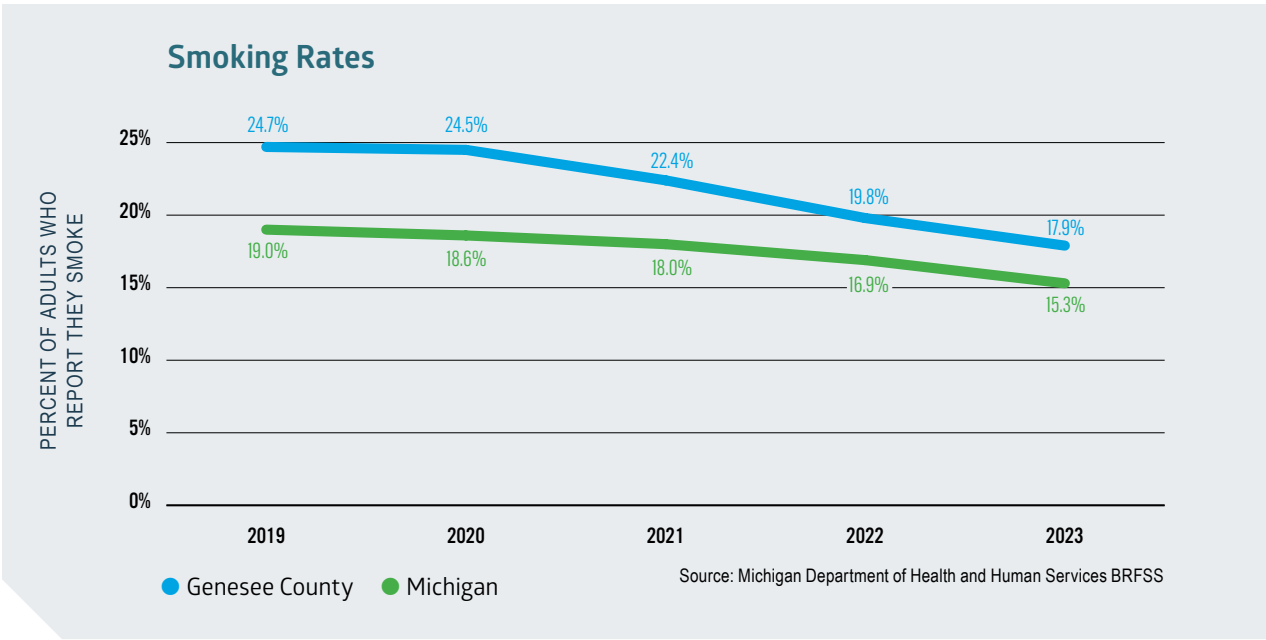
There are a number of reasons that this is a high priority concern for the community. Obesity increases an individual’s risk of developing serious chronic conditions such as diabetes, heart disease, cancer, etc. Lack of leisure time physical activity plays a considerable role in obesity as well as the development of chronic disease. Genesee County residents report a higher rate of no leisure time physical activity than their counterparts in the state of Michigan.

No Leisure Time Physical Activity (% self-reported) 2023

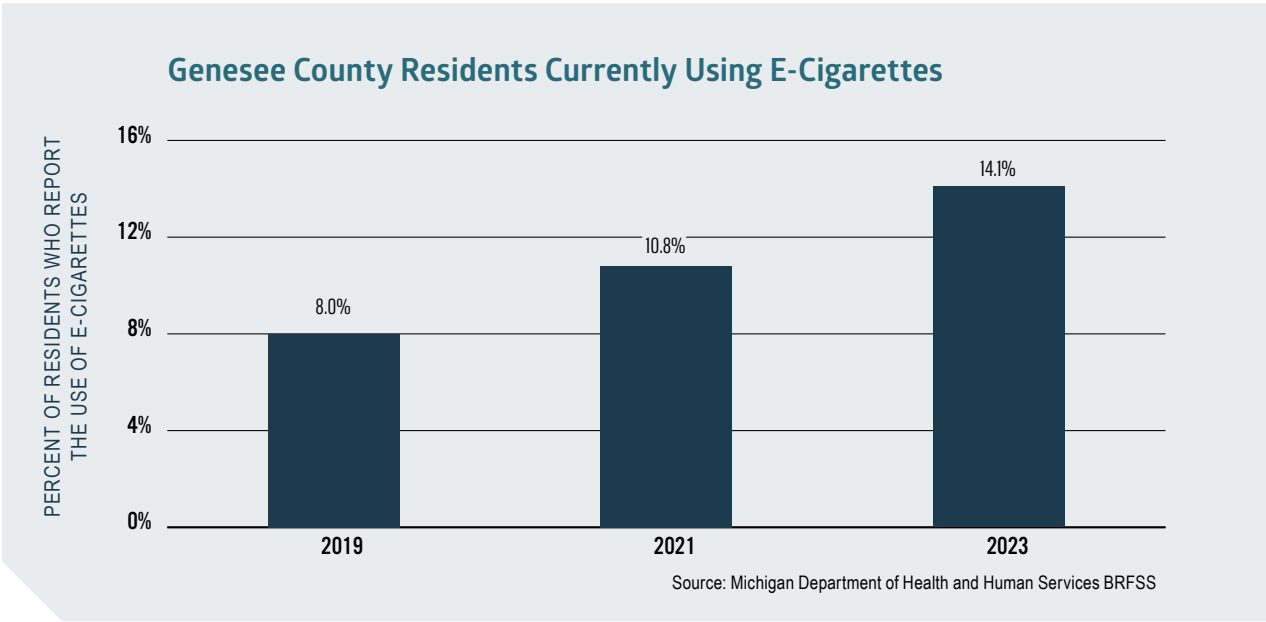
Genesee County	29.3%
Michigan	24.1%

Source: Centers for Disease Control and Prevention Behavioral Risk Factors Surveillance System (BRFSS)

Smoking is a significant risk factor for poorer health (e.g., pulmonary disease, cardiac disease, etc.) and higher health care costs. Genesee County’s decreasing smoking rate currently (17.9%), though decreasing is still higher than the state (15.3%) and national rates (11.6%).



There are additional concerns around residents vaping as an alternative to smoking. However, minimal data exists regarding vaping. Since 2019, there has been a steady increase in Genesee County residents using e-cigarettes.



Community Response:

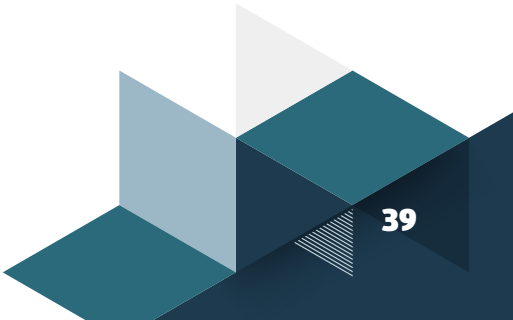
When Genesee County residents were asked via the 2025 CHNA Community Resident Survey 14% of residents indicated healthy behaviors and lifestyle as a key component for a healthy community. Additionally, 18% of residents indicated obesity as a health problem.

Health Care Access

Health care access is impacted by a variety of factors such as healthcare coverage, affordability, and capacity for primary and specialty providers. Additionally, a variety of social determinants of health can impact residents' ability to access and receive care. Fortunately for Genesee County residents, only 4.7% are uninsured. It is expected that this number will increase to reflect individuals' no longer receiving healthcare coverage given the end of the pandemic response.

Health Care Access	2020	2021	2022	2023
Percent of residents uninsured	5.6%	5.3%	3.8%	4.7%

Reviewing coverage by type, the number of Genesee County residents enrolled in Medicare as their healthcare coverage type continues to grow each year.



Health Care Access in Genesee County	2020	2021	2022	2023
Number of Medicare recipients	90,745	91,500	92,100	93,424
Number of Eligible Medicaid recipients	150,483	160,778	168,945	157,538
Total number of Genesee County residents with commercial coverage	180,260	176,120	179,160	177,827

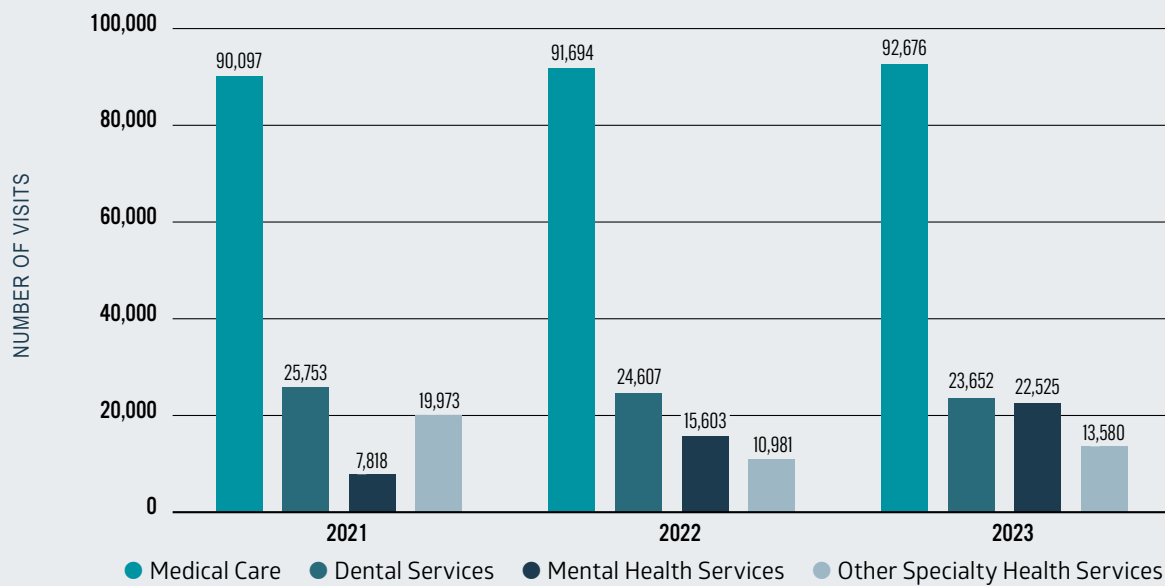
Genesee County's rate of emergency department (ED) visits, though still lower than 2020, has increased between 2022 and 2023. The higher ED utilization rate for Medicare beneficiaries can be explained by the prevalence of chronic disease and illness in the older population.

Health Care Access	2018	2020	2021	2022	2023
Emergency Department Utilization (Total)	197,101	171,257	157,275	147,424	165,678
Commercial	39,255	39,504	37,827	36,001	41,080
Medicare	50,645	44,176	42,725	41,841	47,717
Medicaid	94,947	76,599	68,075	63,014	70,232

However, the high ED utilization rate for Medicaid beneficiaries is often due to access issues, including the lack of a medical home. While all Medicaid beneficiaries have a designated primary care provider, often residents are unaware who their provider is or they are impacted by issues accessing primary care appointments, including a lack of transportation or an inability to receive time off work. Initiatives focused on reducing ED utilization by improving the connection to medical homes and addressing social determinants of health needs (e.g., programs such as Mid-Michigan CHAP) will continue to be important.

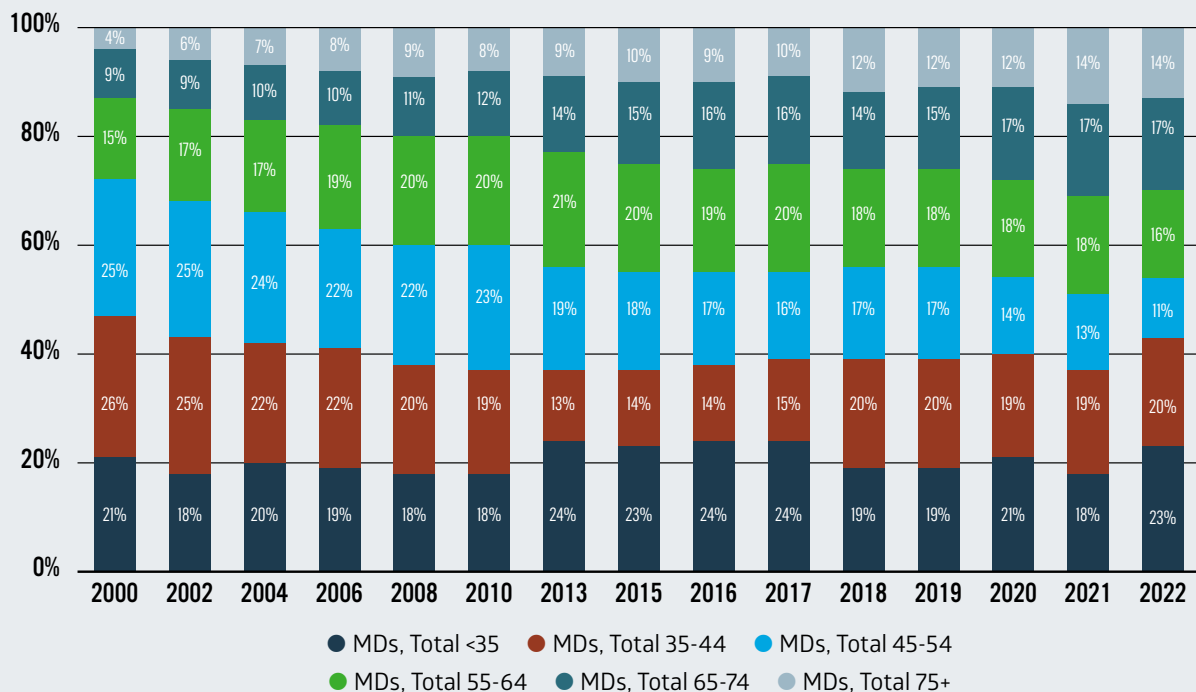
Genesee County's Federally Qualified Health Centers such as Hamilton Community Health Network and the Genesee Community Health Center provide sliding scale services to help reduce the lack of access for the uninsured. The Genesee County Free Medical Clinic and Mott Children's Health Center also support residents who may otherwise lack access to care. Furthermore, the millage funded Genesee Health Plan can provide limited coverage for doctor visits, prescriptions, and adult dental services to residents who lack coverage. Safety net total visits increased 6.7% from 2022 to 2023, much of this increase due to the increase in mental health services.

Total Visits to Local FQHC's



Access to health care also includes the availability and capacity of providers. Genesee County has seen a decrease in primary care physicians from 364 (in 2020) to 323 (in 2021), with 50% of practicing Medical Doctors (MDs) being over the age of 55.

Percentage of MDs by Age in Genesee County



Since 2020, the number of primary care and specialty care post-graduates remaining in Genesee County has declined. More post-graduates are deciding to relocate elsewhere in Michigan. More collaborative efforts are needed within the community's health care system to retain medical school graduates or to attract primary care providers that will sustain access to care.

Community Response:

The 2025 CHNA Community Resident Survey further asked residents about barriers to healthcare access. In response, 41% of Genesee County residents identified an inability to get a timely appointment, 15% indicated not being able to get time off work, and 20% reported not being able to afford prescriptions. Genesee County residents also shared that when they have a health problem or are sick, they go to a primary care provider (83%), urgent care clinic (34%), or treat themselves at home (26%).

Chronic Disease Burden

Genesee County residents experience higher rates of chronic disease and chronic disease mortality than state and national averages for most conditions.

Chronic Disease Burden	2020	2021	2022
<i>Age Adjusted Mortality Rates, Total (per 100,000 residents)</i>			
All Causes			
Genesee County	1,044.6	1,083.0	1,056.0
Michigan	920.1	924.2	852.8
United States	835.4	879.7	834.3
Heart Disease			
Genesee County	232.2	243.4	256.7
Michigan	208.2	203.9	205.4
United States	168.2	173.8	175.8
Cancer			
Genesee County	162.5	166.4	174.5
Michigan	158.8	158.3	153.9
United States	144.1	146.6	147.6
Chronic Lower Respiratory Diseases			
Genesee County	53.1	55.0	53.0
Michigan	42.6	38.7	38.3
United States	36.4	34.7	36.0
Stroke			
Genesee County	49.9	52.8	47.9
Michigan	45.5	44.5	44.0
United States	38.8	41.1	41.8

Chronic Disease Burden (cont.)**2020****2021****2022****Diabetes Mellitus**

Genesee County	36.4	37.4	39.5
Michigan	26.3	26.3	25.6
United States	24.8	25.4	25.0

Kidney Disease

Genesee County	25	26.1	31.1
Michigan	14.9	15.2	15.8
United States	12.7	13.6	14.5

Chronic Liver Disease and Cirrhosis

Genesee County		21.6	18.1
Michigan		15.1	13.7
United States		14.5	14.0

Source: Michigan Department of Health and Human Services

There is also a significant disparity between White and Black residents. Genesee County's Black residents have an age-adjusted mortality rate (for all causes) that is 29.2% higher than the rate for White residents, an increase from the last measurement period. For the 13 causes of death having comparison data available in the latest measurement year, Black residents have higher mortality rates for 10 of those causes with the differences ranging from 8.9% to 177.0%.

2020-2022 Three Year Average Mortality Rate (per 100,000 population)

Cause of Death	White Rate	Black Rate	% Difference Black > White Rates
All Causes of Death	957.0	1,283.8	>29.2%
1. Heart Disease	224.5	273.0	>19.5%
2. Cancer	162.6	177.8	>8.9%
3. Unintentional Injuries	71.8	117.0	>47.9%
4. Stroke	48.0	60.3	>22.7%
5. Chronic Lower Respiratory Diseases	56.8	44.1	<25.2%
6. Alzheimer's Disease	43.6	38.6	<12.2%
7. Diabetes Mellitus	35.2	55.4	>44.6%
8. Kidney Disease	21.8	31.7	>37.0%
9. Chronic Liver Disease and Cirrhosis	16.0	19.1	>17.7%
10. Pneumonia/Influenza	11.8	22.6	>62.8%
11. Intentional Self-harm (Suicide)	15.4	7.7	<66.7%
12. Parkinson's disease	12.8		
13. Septicemia	7.9	17.3	>74.6
14. Assault (Homicide)	3.8	62.4	>177.0%
15. Nutritional Deficiencies	2.8		
All Other Causes	222.5	346.9	>43.7%

Data Source: Michigan Department of Health and Human Services

The prevalence of chronic disease has consistently played a role in Genesee County being ranked in the bottom quartile for health outcomes and length of life according to the Robert Wood Johnson Foundation's County Health Rankings initiative. Genesee County experiences numerous factors that contribute to chronic disease: an aging population, obesity, the practice of unhealthy behaviors, substance use, lack of healthcare access, and the many social determinants of health needs (poverty, food insecurity, health literacy, etc.) previously highlighted.

Premature death is measured by years of potential life lost (YPLL) before age 75 per 100,000 population (age-adjusted). Genesee County's overall Years of Potential Life Lost Rate has increased to 11,400 from 10,100 in 2022.

Chronic Disease Burden

2021

Years Potential Life Lost (3 yr avg)

Genesee County	11,400
Genesee County Black	19,600
Genesee County Hispanic	10,800
Genesee County White	9,400

High rates of chronic disease place a burden on communities in several ways. Individuals with chronic conditions utilize exponentially more healthcare resources than the general population, making it far more expensive to care for and insure them. When chronic conditions limit an individual's ability to work or maintain independence, it results in morbidity, lower quality of life, depression, lost economic productivity, and added strain on social programs. This is evidenced by Genesee County ranking in the lowest quartile for Michigan counties in the Quality-of-Life metric for the 2025 County Health Rankings Report. This metric includes measures specific to poor physical health days and poor mental health days, etc.

Poor Physical Health Days

Poor Mental Health Days

Genesee County	4.7	6.3
Michigan	4.0	5.6
United States	3.9	5.1

Source: RWJF County Health Rankings 2025

Community Response:

When Genesee County residents were asked to list the three most important “health problems” they chose obesity (18%), cancers (14%), and diabetes (14%).

Maternal & Child Health

Maternal & child health not only determines the health of the next generation, it can help predict future public health challenges for families, communities, and the health care system. Healthy birth outcomes and early identification and treatment of developmental delays and disabilities among infants can prevent death or further disability and enable children to reach their full potential.

Infant mortality has been a concern for many years in Genesee County and the infant death rate per 1,000 live births for both Flint and Genesee County has been steadily increasing. The infant death rate for Flint is 18.1 per 1,000 live births, almost three times as high as the state of Michigan.

Maternal & Child Health

2020

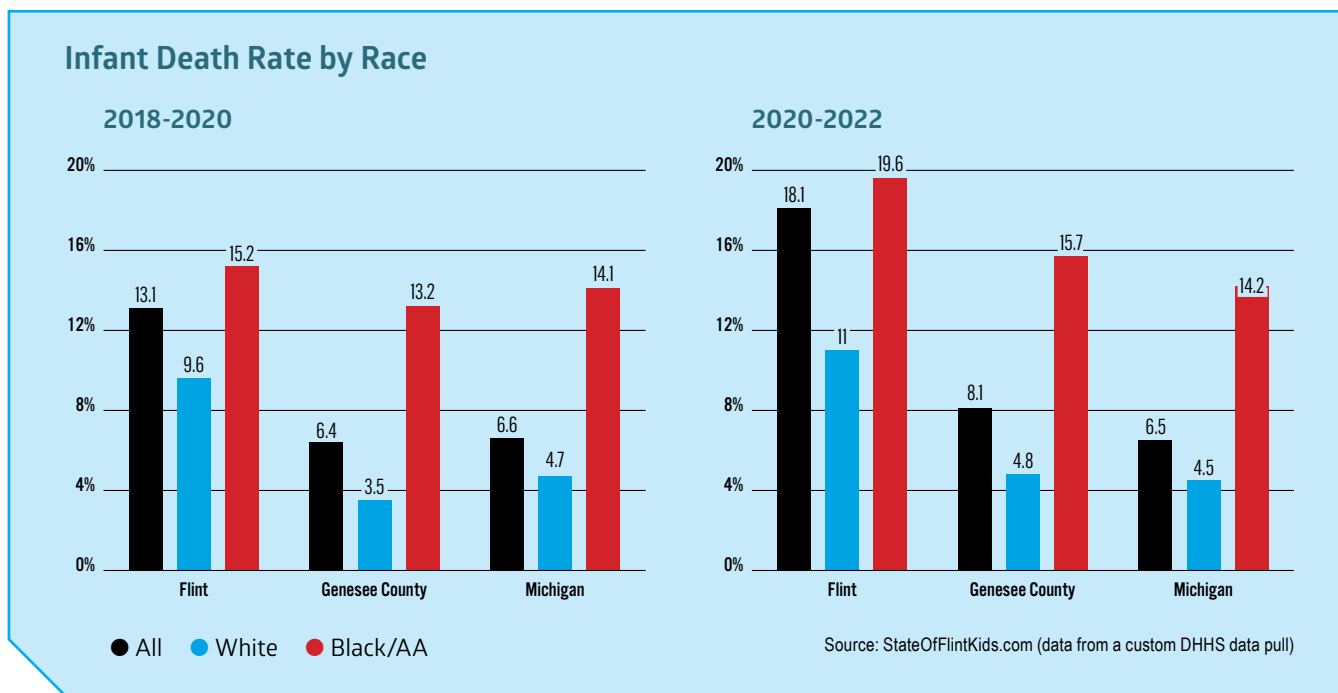
2021

2022

Infant Death Rate (per 1,000 live births) 3 yr avg.

Flint	13.1	14.2	18.1
Genesee County	6.4	7.0	8.1
Michigan	6.6	6.5	6.5

When examining infant death rate by race, there is a significant disparity between races.



The risks for infant mortality and morbidity are increased by low birth weight and preterm birth. Low birth weight and preterm birth, with their associated economic and social costs, are far reaching, particularly among the most vulnerable populations. Low birth weight infants (under 2,500 grams) are at high risk for health problems. Both Flint and Genesee County have higher rates of low birth weight infants and preterm births.

Percentage of Infants with Low Birth Weight

2023

Flint	17.2%
Genesee County	11.8%
Michigan	8.9%

Percentage of Births that are Preterm

2023

Flint	16.8%
Genesee County	12.5%
Michigan	10.3%

Maternal health is closely linked to newborn survival. Prenatal care is important to both the health of the mother and her unborn child. In Genesee County 2023 data showed 1,229 live births out of 3,983 or 31% had no prenatal care in the first trimester. For the state of Michigan overall it is 24%. Pregnant women in Genesee County receive less prenatal care than their county and state level counterparts and the number has been trending upward. The same holds true for less than adequate prenatal care.

Data indicates that demographically, Flint and Genesee County mothers are more often teenagers, less educated, lack spousal support, and/or have poorer health behaviors than Michigan mothers. These are all risk factors for poorer infant health outcomes.

Percentage of Births to Teens Under Age 20

2023

Flint	7.6%
Genesee County	5.0%
Michigan	3.5%

Percentage of Births to Mothers with <12 Years Education

2023

Flint	23.4%
Genesee County	11.9%
Michigan	9.8%

Percentage of Births to Mothers with No Diploma or GED

2023

Flint	24.8%
Genesee County	12.2%
Michigan	10.6%

Percentage of Births to Unwed Mothers

2023

Flint	82.9%
Genesee County	54.7%
Michigan	38.6%

Percentage of Births to Mothers Who Smoked During Pregnancy

2023

Flint	17.8%
Genesee County	10.7%
Michigan	6.5%

Genesee County's children are at a significantly higher risk for poor health outcomes and poor educational outcomes over the life course. In the city of Flint 58.8% of children are living below the federal poverty level. This percentage is more than double the percentages for the state of Michigan and almost triple the amount of the United States.

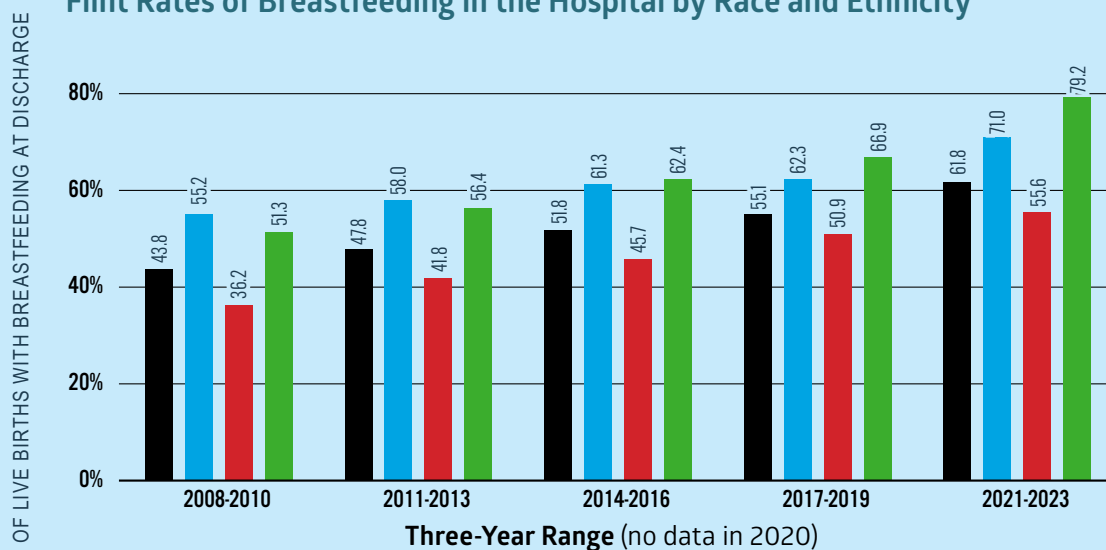
Percent of Children <18 Below Poverty Level (5-year estimate)

2023

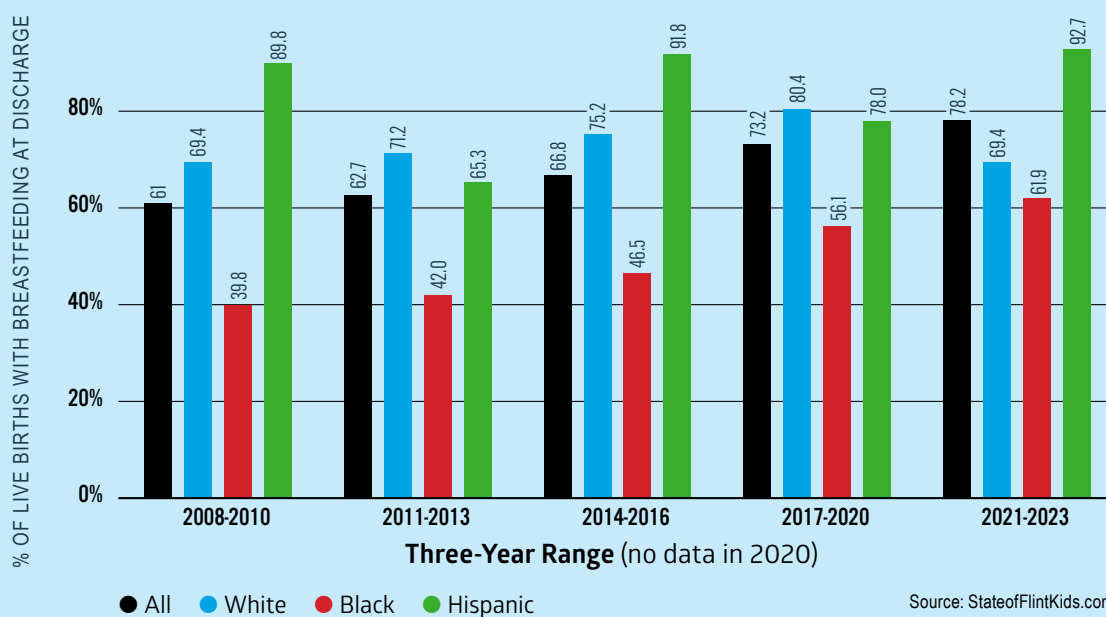
Flint	58.8%
Genesee County	25.4%
Michigan	17.6%

Breastfeeding has health benefits for both babies and mothers. Within Flint and Genesee County there has been a steady increase in percent of live births with breastfeeding at discharge.

Flint Rates of Breastfeeding in the Hospital by Race and Ethnicity



Genesee County Rates of Breastfeeding in the Hospital by Race and Ethnicity



Source: StateofFlintKids.com

Analysis of data provided by several Genesee County commercial and Medicaid health plans has identified that Genesee County children often lack preventive health services. Combination 10 immunization rates (at 2 years) are over three times higher for commercially insured children than children with Medicaid healthcare coverage. Lead testing rates have declined for children insured by both Medicaid and commercial insurance. However, in October 2023, Michigan enacted a bill that requires all children at 12 and 24 months, and those in high-risk areas or situations be tested for lead exposure, with the goal of early detection and intervention.

Maternal & Child Health

2020

2021

2022

2023

Well Child/Adolescent Visits First 15 Months

Medicaid	53.9%	43.9%	42.5%	47.2%
Commercial	79.5%	79.3%	80.0%	80.6%

Immunization Status Combination 10 (rate=completing/eligible)

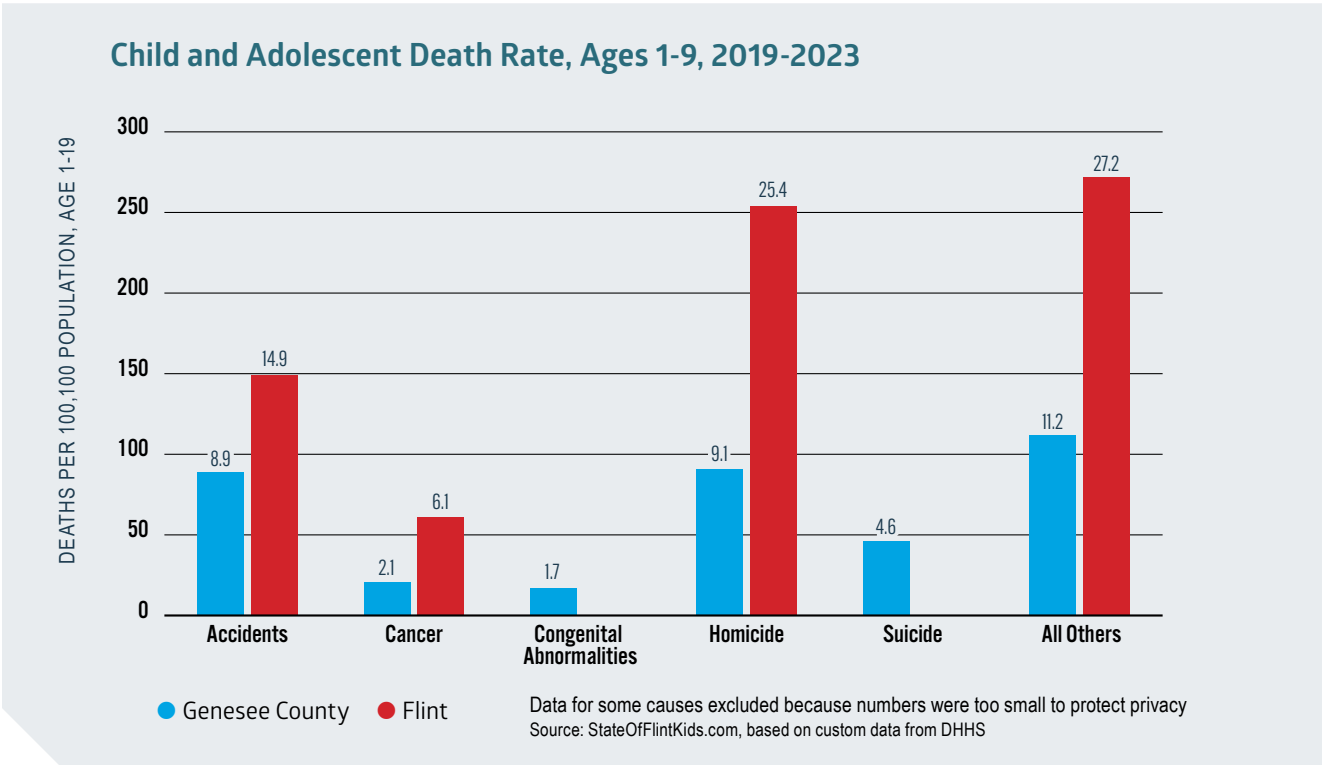
Medicaid	13.0%	9.2%	7.3%	6.8%
Commercial	34.0%	33.9%	26.8%	29.4%

Lead Screening (rate=completing/eligible)

Medicaid	62.0%	43.5%	43.7%	42.5%
Commercial	24.3%	19.8%	23.8%	22.4%

Poverty and social determinant of health needs impacting Genesee County families can also generate stress and anxiety, which in turn can lead to greater likelihood of child abuse or neglect. Parents living in poverty often do not have access to the resources necessary to provide appropriate care for children. Child abuse and neglect create Adverse Childhood Experiences (ACEs) with long-term consequences that may include impaired development, academic failure, social and emotional problems, poor relationships, substance abuse and dependency, risky behaviors, and juvenile delinquency. According to the Michigan League for Public Policy, as of 2022, the confirmed number of child abuse and neglect victims (per 1,000 children) is 41.9 for Flint and 15.3 for Genesee County.

The table below shows child and adolescent death rate per 100,000 for Flint and Genesee County. **Note that deaths by overdose are typically coded as accidental, unless the medical examiner determines there was suicidal intent.**



Efforts to provide vulnerable children optimal child and health development, early childhood education, continuous access to a pediatric medical home, access to infant and child behavioral health services, nutrition education, healthy food access, and safe and healthy home living environments must continue on a community-wide scale.

Community Response:

When Genesee County residents were asked to list the three most important factors for a “healthy community” 10% of residents indicated the importance of activities for youth.

2025 CHNA Community Resident Survey Highlights

The 2025 CHNA Community Resident Survey sought input on many health related questions. Below are excerpts from the survey that summarize the community's response. For each question, respondents were asked to identify the top three priorities. The table below illustrates the top answers for each question.

What do you think are the three most important “health problems” in our community?

Substance Use Disorder (alcohol/drug use)	62%
Mental Health Problems	43%
Gun Violence	23%
Obesity	18%
Violence	16%

What do you think are the three most important “environmental factors” that effect health in our community?

Affordable Housing/Homelessness	66%
Clean/Safe Drinking Water	48%
Healthy Food Access	44%
Gun Violence	34%
Neighborhood Safety	31%

In the following list, what do you think are the three most important factors for a “Healthy Community?”

Access to Healthcare	58%
Access to Mental and Behavioral Health Services	40%
Good Jobs and Healthy Economy	34%
Low Crime and Safe Neighborhoods	31%
Safe and Affordable Housing	23%

What do you think are the three most important “risky behaviors” in our community?

Drug Abuse	55%
Not Addressing Mental Health Concerns	39%
Alcohol Abuse	35%
Distracted Driving	25%
Poor Eating Habits	24%

What do you think are the three most important “socioeconomic factors” that affect health in our community?

Poverty — Working Poor	42%
Basic Needs (clothing, furniture, household supplies)	40%
Housing — Homelessness	37%
Health Insurance Coverage	28%
Income — Wealth Distribution	25%

If you were asked by the mayor, governor, or president what the top health concerns Flint & Genesee County should focus on in the next three years, what would your top priority activities be?

Housing/Affordable Housing	35%
Mental Health	27%
Clean Water	22%
Healthcare	18%
Gun Violence	15%

Useful Data Sources for Health and Health-Related Topics

The organizations that support the completion of the CHNA understand that data is published more frequently than this report is updated. Therefore, below is a list of resources we encourage users of this CHNA to explore.

- Offers data from the many Census programs and datasets. Depending on the details of what you are looking for, it can range down to the census tract level. Includes measures of poverty, family structure, health insurance, and many other topics.

- MDHHS (the Michigan Department of Health and Human Services) large dataset of health information.

- Links to additional MDHHS information.

- Detailed reports about many pregnancy and birth data.

- Official state database of Michigan school data.

- Federal information about births deaths, and other health related data. Cause of death reports are available at <https://wonder.cdc.gov/ucd-icd10.html>.

- A large database of information about children's health and health-related information for all states, and many counties and cities, including _____, and within it, Genesee County, and some data for Flint.

- The Greater Flint Health Coalition's dashboard of children's health and health-related data.

- Information about people and families who are in financial distress but don't meet the criteria for poverty. Contains data for Michigan, Michigan counties, and some cities within them.

- Provides the familiar circle chart of air quality, as well as maps and historical trends.

- Summarizes a number of issues around health and healthcare in a school-like A-F grade format, comparing Flint, Genesee County, Michigan, and the United States.

- provides data on its initiatives.

- These documents include details evaluating of various community needs, many of which are closely related to health.

- An annual federal survey covering a number of health and health-related items.

- Dashboards that provide information about enrollment, disparities by population, inpatient utilization, and other statistics for Medicare enrollees.

- Provide data in a number of areas, as well as public information.

- Interactive maps and datasets on several topics.

- Datasets covering an array of topics including program enrollment, quality measures, and performance data, often providing reports in pdf format that include charts and data tables.

- Makes a large amount of data on opioid abuse and related factors by county and other geographies. The dashboard includes including death and other effects of opioid use; rates of use, prevention and treatment; and social determinants of health.

Appendix A: Evaluation of Impact From 2022 CHNA Implementation

The 2022 Community Health Needs Assessment (CHNA) Report prepared for the Flint & Genesee County community identified twelve priority health needs affecting the community at the time. In order to have the greatest impact improving health behaviors and health outcomes related to the priority health needs, Genesee County's three hospital systems (Henry Ford Genesys Hospital [formerly Ascension Genesys Hospital], Hurley Medical Center, and McLaren Flint) each developed individual CHNA Implementation Plan activities as well as a number of shared CHNA Implementation Plan activities in partnership with the Greater Flint Health Coalition. Below is the 2022 Genesee County CHNA Implementation Plans sought to impact the following ten priority community health needs:

- Addictions (including the Opioid Epidemic)
- Mental Health (inclusive of Stress, Anxiety, and Depression)
- Social Determinants of Health
- Obesity & Healthy Behaviors
- Health Care Access
- Chronic Disease Burden
- Maternal & Child Health
- Health Inequities (including the burden of systemic Racism)
- Safe & Affordable Drinking Water
- COVID-19

Below is 2022 CHNA Joint Implementation Plan accomplishments conducted by Henry Ford Genesys Hospital (formerly Ascension Genesys Hospital), Hurley Medical Center, and McLaren Flint in Partnership with GFHC's Collective Impact Activities with the Greater Flint Health Coalition

Community-Wide Strategy to Address the Opioid Epidemic and Other Emerging Substance Use

Priority Health Needs Addressed: Addictions, Health Care Access

Long Term Goal: Continue to implement a comprehensive strategy to provide access to substance use treatment, prevention, and education regarding misuse of opioids and other substances throughout Genesee County.

The Greater Flint Health Coalition's Mental Health & Substance Use Task Force has supported the implementation of a Community-Wide Strategy to Address the Opioid Epidemic, and has included "emerging substances" in its strategy. This multi-sector strategy has integrated care and treatment services that connect individuals with substance use disorders to providers, resources, and community-based recovery and addiction treatment; educated providers and patients on opioid use, risks, and best practice prescribing strategy for target populations (especially seniors); and provided community-based education and prevention activities through schools, providers, law enforcement agencies, and resident groups that are catered specifically to adolescents / teens, adults, and families; among other interventions.

From 2022-2024, the Community-Wide Strategy to Address the Opioid Epidemic and Other Emerging Substance Use Trends accomplishments included:

- Significant expansion in reach and impact across Genesee County through integrated and collaborative approaches to peer-led overdose response and recovery support.
 - The Opioid Overdose Response Program (OORP), led by New Paths, Inc., continued to maintain and build upon partnerships with all three local hospital systems — Henry Ford Genesys, Hurley Medical Center, and McLaren Flint — for the purpose of connecting Peer Recovery Coaches with patients in emergency departments following an overdose or drug-seeking encounter.

- The Genesee QRT continued to be a vital link between overdose survivors and harm reduction, treatment, and recovery services — helping to reduce repeat overdoses and improve community readiness to prevent future incidents in partnership with Genesee County law enforcement agencies, EMS providers, and community-based organizations. Utilizing local overdose data, the Genesee County QRT distributed 27,295 Naloxone kits and 19,874 fentanyl test strips across the county in 2024 alone, providing harm reduction where needed most.
- The R.I.S.E. (Reach, Inspire, Serve, Empower) initiative was established in 2023 in collaboration with the Genesee County Sheriff's Office, Genesee County Community Corrections, Genesee Health System (GHS), Motherly Intercession, Genesee County Quick Response Team, and Mid-Michigan CHAP to provide comprehensive, wraparound support for justice-involved individuals during incarceration and reentry. This initiative has served over 800 individuals, marking significant progress in supporting individuals and families impacted by the criminal justice system.
- Expansion of community-wide efforts to increase Naloxone training, with over 50 Narcan trainings provided throughout the community, in addition to the development of a brief, localized Narcan training video, available on the GFHC.org website.
- Improved Narcan accessibility through installation of Narcan distribution boxes in 27 locations across the county — reaching a diverse range of sectors and settings, including Genesee County MDOT rest areas, community-based organizations, Genesee County hospital systems, churches, the Genesee County Jail, health clinics, labor unions, and higher education campuses. These efforts reflect a strong commitment to equipping all corners of the community with lifesaving tools and knowledge to prevent overdose deaths.

Mid-Michigan Community Health Access Program

Priority Health Needs Addressed: Social Determinants of Health (SDOH), Obesity & Health Behaviors, Addictions, Mental Health (inclusive of Stress, Anxiety & Depression, Healthcare Access, Chronic Disease Burden, Maternal & Child Health, Health Inequities (including the burden of system Racism), Safe & Affordable Drinking Water, COVID-19.

The Greater Flint Health Coalition's Mid-Michigan Community Health Access Program (CHAP) was established in 2015 as a collaborative effort to address the significant health disparities experienced by low-income children enrolled in Medicaid via a collaborative, physician-driven, community-based medical home initiative. In 2017, Genesee CHAP expanded and began to serve adults. In 2023, Mid-Michigan CHAP began to serve communities outside of Genesee County. Locally, the three Genesee County hospital systems are all Mid-Michigan CHAP partners, each identifying and referring patients from their affiliated primary care clinics for community-based services as well as providing leadership as members of the Mid-Michigan CHAP Steering Committee. Mid-Michigan CHAP works to improve access to a medical home and community resources for underserved, low-income children and adults through a transformation of service delivery at the family, practice, and system levels. Mid-Michigan CHAP's population-based approach emphasizes use of a patient centered medical home and prevention, including preventative visits and immunizations. In addition to improving access to a medical home and use of prevention and education services, Mid-Michigan CHAP seeks to improve health outcomes for Medicaid covered children and adults, while reducing inappropriate emergency room visits and hospital admissions, among other targeted efficiencies.

The community-based Mid-Michigan CHAP team, composed of nurses, social workers, and community health workers, provide CHAP referred families with education, case management, care coordination, patient navigation, referral to community and social resources, transportation, and other associated support services that aid children and adults with increased access and improved health outcomes. CHAP staff work to help patients and their families overcome any barriers to healthcare access that they may be experiencing as well as address other challenges related to social determinant of health needs so that they are able to make healthcare a priority.

From 2022-2024, Mid-Michigan CHAP accomplishments include:

- Expanded the number of partnering medical home practices from 42 to 126 referring medical partners.
- Provided CHAP services in 2024 to an average of 1,714 unduplicated clients per month, with 82% of referrals being resolved (includes clients that declined services).
- Expanded CHAP special projects to include initiatives related to Community Health Workers, Stroke Prevention, and Healthy Heart Ambassadors.
- Continued an OB/GYN Lead Risk Screening Program for Pregnant Women as a primary prevention strategy.
- Continued to provide clients with COVID-19 education, COVID-19 testing, and information regarding COVID-19 vaccinations.

Commit to Fit

Priority Health Needs Addressed: Obesity & Health Behaviors, Social Determinants of Health (Food Insecurity), Child Health & Development, Chronic Disease Burden, Health Equity

Commit to Fit is a community-wide, health behavior improvement initiative focused on increasing the practice of healthy behaviors (lifestyles) while improving physical activity and nutrition habits among residents. Launched by the multi-sector partners of the GFHC, Commit to Fit aims to mobilize all community sectors to support and utilize a common message and shared strategy for engaging community residents in efforts that provide a number of no cost resources that support improved health behaviors, such resources include opportunities to engage in free physical activity and nutrition education classes/sessions based in the community. In addition, local physicians, healthcare providers, and workplace wellness programs partner via the GFHC to reinforce and promote efforts within their service delivery that support health behavior improvement and a reduction in sedentary lifestyles.

From 2022-2024, Commit to Fit accomplishments included:

- Conducted multi-method outreach that engaged the Genesee County community with consistent physical activity and nutrition education messaging and resources.
- Hosted free community physical activity and nutrition challenges throughout each calendar year, including the Fall 4 Fitness Challenge with over 750 participants from 37 local businesses in 2024.
 - Redesigned the Active Schools Challenge in collaboration with the Genesee Intermediate School District to encourage increases in students' physical activity during the school day so they achieved improved cognition, emotional regulation and academic performance. During the month of February 2025, almost 3500 students from nearly 150 classrooms participated in the Challenge and logged more than 1.4 million minutes of extra physical activity per school day.
- Continued and expanded nutrition and physical activity education classes taught directly by Commit to Fit staff, including:
 - Cooking with Kids, a free, evidence-based program that teaches families about healthy eating and preparing affordable foods from diverse cultures. This evidence-based program empowers children and families to make healthy food choices through hands-on learning with fresh local foods and simple recipes. Three hundred twenty-five children and parents/caregivers participated in Cooking with Kids from 2022 through 2024. The Flint Children's Museum continued to partner with Commit to Fit by hosting the class.
 - SNAP-Ed funded nutrition and physical activity programs that included Fresh Conversations and Fork in the Road (nutrition education for older adults), The Learning Kitchen (nutrition education for all adults) and Rec-Connect™ (physical activity education for all adults). From 2022 to 2024, over 1,000 adults participated in SNAP-Ed direction education.

- Tai Chi for Fall Prevention funded by a grant from the National Recreation and Park Association (physical activity education for older adults) with over 150 participants in its first 18 months. The program improves older adults' muscular strength, flexibility, balance and stamina to decrease their risk of falls.
- Walk with Ease, a program designed by the Arthritis Foundation, which combines self-paced walks with information about related topics and allows participants to work on their own at their own pace to increase their physical activity. Seventy adults (the vast majority of which were older adults) participated in the program from 2022 to 2024.
- Prepared and distributed two monthly health and wellness resource calendars throughout Flint and Genesee County:
 - A Nutrition Resource Calendar that detailed free cooking demonstrations, mobile food giveaways, food pantries and food related resources. This collection of resources was facilitated by Commit to Fit and created in partnership with the Crim Fitness Foundation, Flint Farmers' Market, Food Bank of Eastern Michigan, Hurley Medical Center, Michigan State University Extension, Flint Fresh Food Hub and local food pantries.
 - A Free Fitness Class Calendar that contained over 30 weekly fitness classes each month hosted by Commit to Fit community partners and collectively increased access to opportunities to be safe and active. Classes offered included Yoga, fitness drumming, Aqua Zumba, balance, walking, trail hikes and arthritis exercise.
- Actively participated on the Flint & Genesee Food Policy Council to improve healthy food access in Flint and Genesee County. Commit to Fit facilitated the Council's Genesee County Food Pantry Network that provided technical and resource support to the organizations comprising the supplemental and emergency food system in Genesee County.

Connecting Kids to Coverage

Prioritized Health Needs Addressed: Healthcare Access, Health Equity

The Greater Flint Health Coalition launched the Connecting Kids to Coverage Outreach and Enrollment Program to support and coordinate Medicaid and Children's Health Insurance Program (CHIP) outreach and enrollment efforts in Flint and Genesee County, Michigan. This effort not only includes children, but also parents as well as pregnant women impacted by the Flint Water Crisis. This program leads the coordination of a community-wide effort to promote utilization and retention of Medicaid benefits. The Connecting Kids to Coverage program seeks to not only provide outreach to children and their families, but to assist families with the enrollment and retention process.

From 2022-2024, Connecting Kids to Coverage accomplishments included:

- 18,105 children and adults provided with new enrollment and redetermination support.
- 30,533 health coverage education materials directly distributed to community residents.
- 311 community-based outreach events as well as virtual enrollment cafes were held to support Connecting Kids to Coverage outreach and enrollment assistance resources.

Flint Healthcare Employment Opportunities (FHEO) Program

Prioritized Health Needs Addressed: Social Determinants of Health (Education, Employment, Poverty)

The Flint Healthcare Employment Opportunities (FHEO) Program was designed to assist unemployed and underemployed residents of Flint and Genesee County with obtaining training and employment in the healthcare industry. FHEO Program participants receive:

- Career readiness and “fit” assessments,
- 120 hours of Healthcare Life Skills Training and Career Exploration Workshops
- Credential Training
- Assistance with tuition, books, uniforms, exam/license fees, and work supplies
- A career advisor to assist with decision making and goal achievement
- Resume, interview skills, and financial literacy workshops
- Employer connections and job search assistance
- Subsidized employment opportunities for out of school youth

Nearly 1,900 participants have been accepted into the FHEO Program to date, of which 88% are employed with a 97% employment retention rate over the past five years.

Henry Ford Genesys Hospital (Formerly Ascension Genseys Hospital)

Prioritized Health Needs Addressed: Mental Health

Ascension expanded the use of Screening Brief Intervention and Referral to Treatment (SBIRT), PHQ-9, Adverse Childhood Experiences to identify mental health patients in various primary and specialty care settings. Screening forms for behavioral health/substance use disorders were standardized, and a designated unit for geriatric patient population maximized inpatient bed utilization. Ascension Michigan effectively established electronic health record platforms in primary care settings for case management of behavioral health patients.

Prioritized Health Needs Addressed: Addiction

A multidisciplinary substance use disorder inpatient consult/rounding team was established in 2021. Since that time, more than 50 Internal Medicine and Emergency Medicine medical residents have completed the 2–4-week patient care rotation and have learned about substance use disorders, with a focus on opioid use disorder. They have learned how to diagnose the disorder, manage acute withdrawal symptoms, and initiate treatment with medications approved to treat opioid use disorder. These patients are provided with resources to continue treatment in the outpatient setting upon discharge. They are also offered a prescription as they transition to the outpatient setting for intranasal naloxone to treat accidental overdose. The outpatient/retail pharmacy at Henry Ford Genesys Hospital has access to grant funds to assist with the cost of the medication.

The inpatient pharmacy team's focus is to target patients who experience pain who have high daily opioid requirements; admitted patients receiving either transdermal fentanyl patches or 50 morphine milligram equivalents per day of around-the-clock opioid treatments are identified using electronic clinical decision support tools. Such patients are at increased risk of accidental overdose. The inpatient pharmacists received training from both the Michigan Opioid Prescribing Engagement Network and the local clinical pharmacy specialist with substance use disorder expertise about how to engage such patients in stigma-reducing conversation and education about safe storage and disposal of opioids, and about signs and symptoms of accidental overdose. The patients are offered free locking prescription vials for safe medication storage as they transition to the outpatient setting. They are also taught how to use intranasal naloxone. If they wish to obtain intranasal naloxone, the inpatient and outpatient pharmacy team work to deliver the medication to the bedside prior to discharge. Grant funds can be used to assist with the cost of the medication. The inpatient pharmacy team has

provided education to more than 200 patients since the inception of this program. Locking prescription vials have been provided to more than 40 patients. Intranasal naloxone has been provided to more than 100 patients. The emergency department team focused on the provision of medications and supplies to patients with OUD. The primary initiative was the distribution of naloxone to at risk patients in the emergency department. Through partnership with the Michigan Opioid Prescribing Engagement Network naloxone kits were obtained and distributed through the emergency department. Naloxone kits were distributed to more than 80 emergency department patients from 2022-2024. In the latter half of 2024 a free naloxone distribution box was made available in the emergency department lobby with unrestricted access to naloxone for the members of the community and patients. The distribution box provides ongoing access to naloxone to the community.

The inpatient pharmacy team has led four multidisciplinary Medication Take Back Days either on the hospital campus or at locations in the community; these are open to the public to offer safe disposal of unneeded medications.

One Henry Ford Genesys inpatient clinical pharmacy specialists participates in the Greater Flint Health Coalition Mental Health and Substance Use Task Force. One of the inpatient clinical pharmacy specialists hosted an "International Overdose Awareness Day" event in the hospital lobby and dispersed postage-prepaid envelopes to the public to facilitate mailing of unneeded/unused medications to an incinerator for safe disposal. The pharmacist also dispersed packages containing a drug deactivation system (Deterra) to allow at-home safer at home medication disposal.

Prioritized Health Needs Addressed: Chronic Disease

The Henry Ford Genesys stroke program participates in regular stroke screening events in collaboration with the Greater Flint Health Coalition. These screenings are hosted at the Genesee County Free Medical Clinic. The screening is free to the public and includes cholesterol, hemoglobin A1c, and blood pressure monitoring; assessment of stroke risk factors; nutrition and smoking cessation education (if applicable); and instruction on activating the 911 system for suspected stroke. In addition, Henry Ford Genesys provided blood pressure monitoring, stroke risk factor screening, and stroke recognition education during the Flint Feed the City event on June 11th, 2024.

On March 27th, 2024, Ascension Oncology Services held a colorectal screening event held at Genesys Hospital. Participants were invited to join an informational meeting with educational presentations from a registered dietitian and a gastroenterology fellow. Education was provided on the benefits of screening, risk factors of colon cancer, prevention of colorectal cancer including timely screening and nutrition, and more. Applicable participants received a free colorectal cancer screening test provided by the Genesys Laboratory. There were 8 attendees to the presentation with 8 applicable people taking home the free screening test. The GI/Colorectal cancer nurse navigator at Genesys monitored submission of screening test and followed up with patients with results and follow up care as needed.

A heart screening event reaching 136 people was hosted on April 27, 2024, including a health screening of vital signs, blood sugar, BMI, stroke assessment and 1:1 consultation with a physician.

Genesee Health Plan emPOWER provides a community health worker via a Henry Ford Genesys-supported grant to our clinics to assist in addressing the socio-economic needs of our community members, including our diabetic patients.

Prioritized Health Needs Addressed: Maternal & Child Health

The Women's Health Service Line in collaboration with the Genesys Maternal Health Department has been working diligently to reduce the complications associated with Severe Maternal Morbidity (SMM) and to improve access to prenatal care. Several initiatives have been implemented during the last two years that have led to improvement in both of these critical areas.

The reduction of the SMM rate is largely dependent on reducing the need for blood transfusions following delivery. The key tactics to address this issue have been the use of IV Iron in both the prenatal care setting and in the immediate post-partum setting. For patients who are clinically stable, an iron transfusion is a viable option to improve outcomes while reducing the risk. A system-wide policy was created and implemented at each site to provide guidance for the management of the stable postpartum patient. This policy addresses the importance of considering an iron transfusion as opposed to a blood transfusion, when appropriate. Along with this policy, a transfusion tracker has been developed to assist the healthcare professionals in tracking the number and appropriateness of blood transfusions given. These two initiatives, along with the diligent efforts of the Genesys team have resulted in a 25% improvement in the SMM rate and a 35% reduction in avoidable blood transfusions.

Improving rates of prenatal care is largely based on understanding the reasons why a patient may miss or be unable to attend their prenatal care visit. To assist with this effort, Social Determinants of Health (SDOH) screening is completed on patients receiving care at Ascension Medical Group practices. These screenings provided valuable insight into patient needs that could be addressed with referrals to community support services. Providing patients with the resources they need to optimize care has allowed the Ascension Medical Group to report that 98% of their patients have attended 8 or more prenatal visits prior to delivery.

McLaren Flint

Accomplishments of 2022-2024 Implementation Plan

Prioritized Health Needs Addressed: Social Determinants of Health (SDOH)

INITIATIVE: Increase public safety and community engagement, reducing blight in and around the University Corridor.

- Recognizing the need to maintain a safe, clean, blight free neighborhood, McLaren Flint worked with the city of Flint and the County to purchase and demolish the abandoned multi-apartment complex on 809 S. Ballenger Hwy., formally called Westcomb Manor/Ballenger Court Apartments. The plan is to create a safe, open, greenspace.
- McLaren Flint's security team coordinates and works with the local law enforcement and other establishments in the University Corridor, to reduce crime and to educate community on crime prevention.
- McLaren Flint donated \$10,000 over the three-year period to support the University Corridor program.

Prioritized Health Needs Addressed: Social Determinants of Health (SDOH)

INITIATIVE: Provide vulnerable individuals with food insecurity in Genesee County access to healthy food resources.

- On a weekly basis, McLaren Flint donated over-produced food that was prepared in the hospital Nutritional Services department to the Genesee County Food Rescue Program for distribution to people in need through their soup kitchen and food pantry at the New Life Center.
- 8,291 lbs. of food was donated to the Genesee County Food Rescue Program to increase its capacity to provide healthy food and meals for people with food insecurity who are served through the New Life Center. The value of this donation (estimated \$1.25 per pound) is \$10,364.

Prioritized Health Needs Addressed: Social Determinants of Health (SDOH)

INITIATIVE: To identify and address SDOH barriers that impact medical care and recovery for patients discharged to Skilled Nursing Facilities (SNF) with goal of resource provision and reduction in hospital readmissions.

- McLaren Flint Case Management met with all patients being discharged to Skilled Nursing Facilities (SNF) and screened them for Social Determinants of Health using a SDOH screening tool. Screening results were shared with the appropriate SNF to promote continuum of care in addressing patient needs, connecting patients to resources, and reducing hospital readmission.

- McLaren Flint Case Management further provided a daily list of patients whose physicians are part of McLaren Physician Partners (MPP) to MPP case managers, with SDOH screening results. These case managers utilized these results for additional follow-up with the patients to ensure success after discharge. For example, over a ten-month period, 458 patients were referred to MPP to support improved care and resource connection for patients discharged to home with high risk for readmission.
- The Case Management Department utilizes social work interns to meet with high-risk patients while in the hospital and do follow-up calls 3-4 days after discharge.
- McLaren Flint Case Management participated in a collaborative program with the Valley Area Agency on Aging Care (VAAA) Transition Program, identifying Medicare patients who were at potential high risk for re-admission. Case managers worked with these patients' physicians to coordinate a referral to the VAAA program. The patient was seen at home the day after discharge by a nurse practitioner through VAAA who could identify/treat medical issues and connect the patient to resources. In addition to VAAA, the case management team refer to the CHAP (Community Health Access Program) and UCAN (United Community Addiction Network) programs.

Prioritized Health Needs Addressed: Overcoming SDOH barriers by improving health outcomes with vulnerable individuals in Genesee County

INITIATIVE: Providing access to healthcare.

- McLaren Flint Family Medicine Resident Physicians (20) partners with Carriage Town Ministries, (CTM) Health Screening Clinic in Flint every Thursday morning for 4 hours to provide basic health care to the residents of the CTM. Fellows from the Behavioral Health Clinic also join residents to help unhoused individuals. Each visit is supervised by one of the Core Family Medicine Residency Faculty.
- McLaren Flint Family Medicine Resident Physicians partner with the Center for Hope (C4H) each Thursday afternoon for 4 hours to provide basic health care to the residents of the C4H. Physician Fellows from the Behavioral Health Clinic also join residents to assist and each visit is supervised by one of the Core Family Medicine Residency Faculty.
- Family Medicine Residents operate a Street Medicine Program offering medical help and basic needs such as jackets, hygiene products, sleeping bags, mittens, and gloves to those standing at the corner of the street and asking for help. Assist an estimated 200 unhoused individuals annually.

Prioritized Health Needs Addressed: Providing employment and financial support to those economically disadvantaged

INITIATIVE: Equitable access to education and reducing college debt improve both income levels and quality of life for our community residents.

- 284 individuals 70% woman, with an average student debt of \$36,500 participated in a McLaren Flint Student Loan Repayment Initiative. More than \$2 million allocated over 3 years.
- 90 local college students facing economic hardships received scholarships at a total of \$135,000.
- Workforce Development Program providing tuition coverage, as well as associated expenses, such as housing for those at Mott Community College and UM-Flint with guaranteed employment for those who meet the requirements. \$300,000 allocated and/or earmarked for 24 individuals

Prioritized Health Needs Addressed: Community Resources

INITIATIVE: Provide Medicare patients with resources to prevent hospital readmissions, ensure continuum of care and meet basic needs.

- McLaren Flint Case Management participated in a collaborative program with the Valley Area Agency on Aging Care Transition Program, identifying Medicare patients who were at potential high risk for re-admission. Case managers worked with these patients' physicians to coordinate a referral to the VAAA program. The patient was seen at home the day after discharge by a nurse practitioner through VAAA who could identify/treat medical issues and connect the patient to resources. In addition to VAAA, the case management team refer to the CHAPS (Community Health Access Program) and UCAN (United Community Addiction Network) programs.

Prioritized Health Needs Addressed: Obesity and healthy behaviors

INITIATIVE: To provide programs to address obesity and promote healthy behaviors for Genesee County residents.

Obesity: Almost two-thirds (64.2%) of Genesee County adults are overweight or obese and the obesity rate of (33.0%) for adults and (20%) for children in the area is greater than the state of the nation. Area adults and children consume inadequate amounts of fruit and vegetables and do not engage in physical activity as much as they should. More than one-quarter (27%) of Genesee County adults report the lack of leisure time or physical activity.

- The McLaren Bariatric and Metabolic Institute offers a comprehensive/multidisciplinary surgical weight loss program, including 2 surgical options, and a behavioral health and nutrition component. From 2022-2024, 729 patients underwent bariatric surgery to address obesity issues.
- 20 percent of those undergoing bariatric surgery attended post-surgical telehealth follow-up for one year for support in maintaining and managing their health. 6 participated in bariatric support groups facilitated by the program's clinical psychologist.
- A dedicated private Facebook page was established for bariatric patients which was facilitated by the bariatric nurse and dietitian with the goal of providing information and support in helping patients manage and address any health concerns as well as provide information regarding additional resources.
- 37 patients from the McLaren Bariatric Program annually were funded by McLaren to participate in the Crim Fitness Program Training Program through a dedicated group led by a member of the McLaren Bariatric Program staff. McLaren invested \$1,500 per year to support this program and provide opportunities for patients to remain active and sustain a healthy lifestyle.
- To promote healthy behaviors, McLaren Flint staff sponsored and supported 33 health fairs assisting 1,517 participants with healthcare needs.

Prioritized Health Needs Addressed: Chronic disease prevention, maintenance, and treatment.

INITIATIVE: Chronic disease prevention, maintenance and treatment are significant health needs in the primary and secondary service areas for McLaren Flint.

Heart Disease & Stroke: Heart Disease is the leading cause of death in Genesee County, and stroke is the fifth highest cause. Area adults have lower life expectancy rates (both men and women) and higher age-adjusted mortality rates than adults across the state or nation. Twenty-two percent of people living in Flint have been told by a doctor or other health professional that they have hypertension (high blood pressure).

- Free monthly stroke support education classes held at the Hospitality House at McLaren open to the residents in our community with an average of 10 attendees at each session.
- McLaren Flint held 25 Stroke Awareness Educational events with 820 participants.
- Approximately 1200 Patients participated in the outpatient (physician referred) Phase 2 Cardiac Rehab exercise program from 2022-2024 to better manage their cardiac health, chronic conditions and improve their overall healthy lifestyle. Equaling approximately 17,500 exercise sessions total, 2-3x weekly.

- An average of 200 cardiac patients and family participated in bi-weekly education classes (2023-2024) or received packets of educational material to better their understanding of an overall healthier lifestyle.

Prioritized Health Needs Addressed: Chronic disease prevention, maintenance, and treatment.

INITIATIVE: To provide resources that assist with education, awareness, and early detection of cancer and to connect those diagnosed with cancer in our community with resources and support during their cancer journey.

Cancer: Cancer is the second largest leading cause of death in Genesee County. The number of people diagnosed with cancer in the state of Michigan in 2021 was 21,221. According to the MI Department of Community Health, for Genesee County in 2020, the top five case types include lung, bronchus (366), breast (301), prostate (269), and colon and rectum (161). Other cancer is 1,082 and the combined total is 2,183.

- McLaren Flint provides free 3-D mammograms for uninsured and underinsured women. More than \$10,000 was allocated to assist patients with an average of \$200.00 per patient.
- Over the last three years, through a partnership with the Flint Firebirds for the Hockey Fights Cancer annual awareness event, over 6,000 people were educated and provided information for prostate and breast cancer awareness along with self-screening information.
- Multiple Myeloma support and weekly education classes with an average attendance of 5 people, hosted for community members at the Hospitality House at McLaren.
- The Healing Through Art Therapy program, is managed by a Registered Art Therapist, which provides a method of coping and self-expression for individuals touched by cancer (patients, caregivers, and family) that uses various forms of art to help the psychological and physiological side effects of a cancer diagnosis. The goal of Healing Through Art is to improve health and promote emotional and physical healing by utilizing the creative visual art process as a therapeutic practice. The program conducted 376 events providing therapy for 1,113 individuals.
- McLaren Flint/Karmanos Cancer Institute participated in community health fairs in 2022-2024 providing education resulting in 1,863 cancer screenings, and referrals for those in need or additional testing.
- Cancer patient Family grief support-hosted by the Karmanos Cancer Institute social worker. Takes place monthly at the Hospitality House at McLaren. 5 people on average per class.

INITIATIVE: To provide resources that assist people with Chronic Health conditions in managing their condition, preventing complications, and improving health outcomes.

Diabetes: Diabetes is the eighth leading cause of death for Genesee County residents. Forty-seven percent of Flint residents report that their diet is generally healthy. People eat an average of four meals (breakfast, lunch or dinner) per week that were prepared away from home in places such as restaurants, fast-food places, food stands, grocery stores, or from vending machines. They get two of their meals from fast-food or a pizza place and eat two “ready to eat” foods such as salads, soups, chicken, sandwiches, and cooked vegetables per month. They also eat three frozen meals or frozen pizzas on average a month.

- To assist patients with resources to better manage their diabetes and improve health outcomes, McLaren Flint provided an Outpatient Diabetes Education Program involving weekly one-on-one and group sessions for patients with diabetes. A team including a dietitian and pharmacist provide education to patients. The program was open to the public, with a physician referral.
- 968 patients participated in the Outpatient Diabetes Management Program from 2022-2024 to better manage their diabetes and improve health outcomes.
- The Outpatient Diabetes Management Program was successful in reducing patients' HgbA1C hemoglobin by 0.8%, exceeding the national benchmark of .6%. Additionally, patients reported an average weight loss of 5%.
- McLaren Flint held 15 Glucose Screening events with 843 participants.

- McLaren Flint provided a Pulmonary Rehabilitation Program for patients with chronic pulmonary disease featuring weekly classes and exercise. The program was open to the public with a physician referral. From 2022-2024, 711 patients participated in the program to manage their chronic disease.
- Outcomes from the Pulmonary Rehabilitation Program include:
 - Improvement in walking capacity from 933 ft. in 6 minutes to 1,178 ft. in 6 minutes.
 - 33% decrease in shortness of breath.
 - 27% decrease in oxygen use.
 - 32% increase in self-reported quality of life.

INITIATIVE: Provide resources to people impacted with Long COVID condition.

COVID: During the pandemic, McLaren Flint experienced a rapid spread of COVID-19 and its varied effects on patients. While many recovered quickly, others experienced prolonged symptoms, known as Long Covid. Long COVID is a condition where individuals experience symptoms lasting months after the initial infection. These symptoms can include fatigue, brain fog, respiratory problems, and others. Long COVID can have a significant impact on daily life and may require ongoing medical care.

- A COVID Navigator position was created and acted as a liaison between patients and healthcare providers, helping patients understand their symptoms and navigate the complexity of the virus. During 2022, 176 Long COVID patients received navigation support, and 63 patients required referrals beyond pulmonologist and Primary Care Physician and involved cardiology, neurology and psychiatry/psychology.

Prioritized Health Needs Addressed: Medical Care Strategies-Health Education

INITIATIVE: To provide Flint residents access to health information and resources that address health behaviors.

- McLaren Flint residents staffed a “Ask the Doctor” monthly series at Eisenhower and recently at Whaley Children’s Center, to discuss various health topics and resources for parents and public. An annual average of 138 families participated in the “Ask the Doctor” series to gain access to timely health information and resources through medical professionals.
- Approximately 360 students were impacted through the Eisenhower School program.
- McLaren Flint provided grant money for the purchase of laptop, projector, and connection chords to support the Ask-A-Doctor virtual program and other virtual learning opportunities at Eisenhower and Whaley Children’s Center.

Prioritized Health Needs Addressed: Medical Care Strategies-Community Partnerships

INITIATIVE: To increase access to medical services for uninsured adults (ages 18-65) who are eligible residents of Genesee County and to assist with transition to sustaining programs of healthcare.

- McLaren Flint internal medicine residents and faculty physicians staff the Genesee Free Medical Clinic three days per week, and provide medical care and services to uninsured clients, at no charge to patients. McLaren Residents provided 1,980 hours to the Clinic and Faculty provided 648 hours to the Clinic.
- McLaren Flint Laboratory Services receives lab specimens from the Free Medical Clinic and performs testing services/results at no charge. The value of these free tests was almost \$200,000 per year, or \$600,000 over the three-year period.

Prioritized Health Needs Addressed: Healthcare support

INITIATIVE: To provide medications for individuals who are being discharged from the hospital and cannot afford to pay for their prescriptions.

- McLaren Flint provided more than \$20,000 in medications to allow patients who could not afford prescription costs to have access to needed medications to support treatment and recovery.

- McLaren employees made donations to a fund through a special campaign entitled “A Little Change Makes A Big Difference.” The process for patients to qualify for the fund involves an initial screening evaluation through which Case Management staff identified patients in financial need. Case managers sent patient prescriptions to Walgreen’s for a cost estimate of the patient portion of their prescription. The case manager then met with the patient to assess if the patient could meet the financial obligation. If not, the case manager worked with the physician to determine if there was a less expensive but effective prescription. If no other alternative was identified, patient medications were funded through the Patient Care Fund, and the patient was connected with community resources for further support.

Prioritized Health Needs Addressed: Healthcare Access

INITIATIVE: To provide transportation to and from healthcare services for patients unable to drive themselves, seek other means of transportation or afford transportation costs.

- With support from McLaren Flint and McLaren Flint Foundation, more than \$200,000 was provided in cab fares, bus fares, and other means of transportation for patients to be safely transported to their home or appropriate setting after discharge from the hospital.

Prioritized Health Needs Addressed: Infant and Maternal Health

INITIATIVE: To provide resources, information and support for mothers and infants in labor, delivery, recovery and postpartum.

- In 2022, McLaren Flint made a commitment to increase the availability of midwifery care and support the promotion of physiologic birth. In 2022, there were 2 full-time midwives providing pregnancy and childbirth care. In 2023, a third was added, and then a fourth in 2024. As a result, the overall C-section rate at our facility decreased annually, from 31.4% in 2022, to 29.8% in 2023, 27% in 2024 and currently in 2025 the rate has dropped to 23.7%. As the only facility in Genesee County that offers LDRP care, our unit specializes in offering a family-centered environment for childbirth. LDRP means that the patient delivers, recovers, and spends the postpartum course all within the same room, and rooming in with the newborn is facilitated by the attentive Family Birthplace staff and the midwifery service.
- McLaren Flint has continued its participation with the Obstetrics Initiative, funded by Blue Cross/Blue Shield of Michigan. OB/Gyn physicians, midwives, OB Nurse Educator, OB RN’s, and OB management have actively participated in conferences and workshops with colleagues across the state to implement best practices and develop a safe, high-quality obstetrical service line.
- McLaren employs a Women’s Health Nurse Navigator within the Family Medicine clinic and is a Lactation Consultant, who provides lactation support to our patients both in the hospital and in the clinic. Women’s Health Nurse Navigator supported lactation services to 283 women and babies.

Hurley Medical Center

Hurley is a 443-bed premier public teaching hospital recognized as a regional leader in advanced specialized health care. Every year, more than 20,000 people choose Hurley for their inpatient hospital care and its Emergency Department handles over 80,000 annual emergency cases. As the region’s only Level 1 Trauma Center and with the region’s only Burn Unit, Neonatal Intensive Care Unit, Pediatric Intensive Care Unit, and Pediatric Emergency Department, Hurley continues to honor its commitment to provide the highest level of critical care to those who need its services.

As well as being a recognized leader in clinical care, Hurley Medical Center is a highly-regarded educator of tomorrow's professionals, maintaining affiliations with Michigan State University, the University of Michigan-Ann Arbor, the University of Michigan-Flint, Children's Hospital of Michigan-Detroit Medical Center, Oakland University, Mott Community College, and Henry Ford Health System. With over 2,700 employees, Hurley is also a major contributor to local economic development and one of Genesee County's largest and most consistent employers. Over the past 110 years, much has changed, but Hurley's standards of excellence and delivery of exceptional care have not. But much more remains to be done. In these times where healthcare economics are in flux and the health status of the region is poor, Hurley Medical Center's vision continues to include expanding beyond the walls of the hospital to provide the best possible care to its patients and their families before they get sick and after they leave the hospital's care. Hurley's job is to become a partner in caring so that people can stay well, live healthier lives and, when they are sick, return to health faster and with better outcomes.

2022-2024 Accomplishments

Prioritized Health Needs Addressed: Addictions

Hurley continues to monitor the protocol for opioid medication use and adjust as needed. The goal remains to aid patients with appropriate pain management, but reduce over prescribing.

Hurley Medication for Opioid Use Disorder (MOUD) Clinic

Services through Hurley's Emergency Department are available for those who seek treatment with opioid use addiction (OUD). Patients receive consultations with a social worker, telemedicine appointments, medications, and referrals to New Paths (a local substance use disorder treatment program). Goals of the clinic include facilitating safe withdrawal by relieving symptoms and controlling cravings, reducing the risk of death due to overdose, increasing retention in treatment with medications, and working to decrease health declines associated with drug use.

Hurley Hopeful Hearts Program

Hopeful Hearts is a safe and judgement free program that provides free classes and support for pregnant women and new mothers suffering from drug addiction. The program allows early access to providers that will follow patients throughout their pregnancy and delivery. Classes provide pregnant mothers with information regarding pre- and post-natal care, signs and symptoms of neonatal drug withdrawal, treatment, and management of Neonatal Abstinence Syndrome (NAS). Throughout the program, educational materials, food, and personal gift items are provided.

Prioritized Health Needs Addressed: Social Determinants of Health

Since 2022, patients are being screened for additional Social Determinants of Health upon intake. Patients are asked about transportation needs, the ability to pay for heating and utility bills, as well as food insecurity. Patients are then given resources to appropriate local, state, or federal programs upon discharge. All patients who go through intake in the urgent cares, emergency department, and clinics are asked the SDOH questions.

Education & Employment

As a teaching hospital, Hurley Medical Center is a highly-regarded educator of the health care professionals of the future, maintaining affiliations with Michigan State University, the University of Michigan-Ann Arbor, the University of Michigan-Flint, Children's Hospital of Michigan-Detroit Medical Center, Mott Community College, and Henry Ford Health System. With over 2,700 employees, Hurley is also a major contributor to local economic development and one of Genesee County's largest and most consistent employers.

Food Insecurity

All patients are screened for food insecurity during intake. Patients are asked a 2-question series to determine their need. Patients are given a list of local food banks upon discharge and are referred to the Hurley Food FARMacy if they qualify.

Hurley Food FARMacy:

The Food FARMacy department opened in autumn of 2017, with Hurley screening all patients for food insecurity and opening a physical location for patients in need. Currently, the Food FARMacy focuses on patients who have both chronic disease and food insecurity. Patients receive a referral to visit the Food FARMacy up to six times for healthy food to feed their entire household. They also get referred/enrolled into additional local/state programs that can help them address additional social needs. Patients have access to a Registered Dietitian to help them address their specific needs in regards to their chronic illness.

Additional Efforts:

- Patients at the Hurley OB/GYN prenatal clinic receive \$15 fruit and vegetable prescriptions that are redeemable at the Flint Farmers' Market and Flint Fresh.
- The Hopeful Hearts program is a safe and judgement free program that provides free classes and support for pregnant women and new mothers suffering from drug addiction. Food giveaways are available to patients during the duration of the program.

Transportation

Hurley continues to work with MTA on transportation solutions for patients. A majority of Hurley buildings are located on bus routes, and the MTA program, Rides to Wellness, can be utilized for patients in need of transportation to medical facilities.

Community Safety

Hurley actively works with local partners to help improve community safety. They have partnered with other organizations on a project to address Human Trafficking. The focus is to work directly with patients who have been affected by violence through their Trauma Resource Center. Additionally, in partnership with the University Avenue Corridor Alliance, patients have access to resources regarding personal safety, housing, and economic development initiatives.

Hurley Injury Prevention

Hurley Medical Center is the lead organization for the Safe Kids of Greater Flint Coalition. Safe Kids and Hurley Injury Prevention provide over 20 active programs to promote risk reduction in the community. Programs included Child Passenger Safety car seat inspections, distracted driving, drinking and driving, fire and burn safety, First Aid, Stop the Bleed, traumatic brain injury, fall prevention, home alone, cooking and poison safety, water safety and drowning prevention, dog bite safety and prevention, bullying, cyberbullying, internet and cyber safety, assault and abuse prevention, high risk behaviors, sports safety, seasonal safety, and more. Bike helmets, gun locks, smoke detectors, car seats, and other giveaways are often available.

Injury prevention spans all ages and saves significant dollars in health care spending. Community partners include schools, social services agencies, regional hospitals, and an array of childhood stakeholders and senior service agencies. Hurley helps to navigate vital safety information, gain access to resources, and holds regularly scheduled injury prevention events.

Prioritized Health Needs Addressed: Obesity & Health Behaviors

Hurley's Comprehensive Weight Loss Center Hurley Comprehensive Weight Loss Center in Flint, Michigan is a nationally accredited Metabolic and Bariatric Surgery Comprehensive Center and BCBS Blue Distinction Center. Our highly skilled board certified surgeons not only specialize in bariatric surgery, but are also credentialed in critical care at a level 1 Trauma Center. Hurley performs procedures such as the RNY Gastric Bypass, Sleeve Gastrectomy, Adjustable Gastric Band, and SADI-S. Extensive follow-up and patient care is given post surgery, including visits with an RN, Registered Dietitian, and an Exercise Specialist.

In addition to our surgical expertise, Hurley now offers a range of non-surgical weight loss programs to meet the diverse needs of our patients. These include a 12-week medically supervised program focused on lifestyle modification, nutrition, and physical activity, as well as options that incorporate weight loss medications, such as GLP1 agonists. The Non-Surgical option expands access to patients who do not qualify for bariatric surgery and includes a multidisciplinary education plan focused on lifestyle changes and developing a healthier relationship with food. Our experienced, comprehensive bariatric team of health professionals is dedicated to helping you achieve your weight loss goals — whether through surgery or non-surgical pathways — by providing personalized care and ongoing support every step of the way.

Additional Efforts:

- Hurley provides sponsorship and support for several run/walks in the community.
- Hurley supports community health screenings, often making available giveaways like scales, blood pressure cuffs, etc.
- Diabetes Self-Management Education is offered for patients newly diagnosed with diabetes.
- Nutrition seminars/healthy cooking demos for Cardiac Rehab patients, offered monthly, reaching 300 patients annually.
- Low-Dose CT Lung Screenings are preventative screenings for current or former smokers to aid in finding lung cancers in the earliest stages.
- The Wellness Department maintains ongoing programs and activities for 2,700 employees; including fitness challenges, nutrition information, blood pressure/A1c/ECG screenings, a robust internal resource website, and the access to a free onsite fitness room and exercise equipment at select off-site locations.
- Monthly support groups are offered for various patients with the goal of health maintenance and continued support (Bariatric, diabetes, etc).

Prioritized Health Needs Addressed: Healthcare Access

Hurley Admissions

Specialists within Hurley Admissions department continue to help uninsured and underinsured patients enroll in Medicaid. Additional resources from the Department of Health and Human Services (DHHS) and Advomas, an outsource company that assists with healthcare applications, assist the Admissions department with Medicaid applications.

Hurley Internal Medicine Outpatient Clinic

This Specialty Access Clinic focuses on care for adult patients for the comprehensive management of medical needs. They specialize in collaborative care of patients with chronic medical illnesses, care for patients with undefined symptoms and complaints, and coordinates with inpatient services for transitions of care via follow-up appointments. Telehealth video appointments are available for patients within the clinic. Additional Specialty Access Clinics are projected and will continue to improve health care access to patients in need.

Hurley Urgent Care

Hurley continues to educate the community on appropriate times to visit an Urgent Care rather than the Emergency Department. To treat minor illnesses and traumas, Hurley has 3 Urgent Care sites that are open 7 days a week, offering shorter wait times with on-site labs and x-ray services. Additionally, Urgent cares can offer viral testing services for COVID-19 and Influenza.

Hurley Virtual Urgent Care (Telehealth)

Hurley continues to provide care to everyone who walks through their doors in addition to those who cannot. As a response to the COVID-19 pandemic, access to Urgent Care/Health Centers expanded by offering virtual Telehealth services for non-emergent needs, and continues to do so when many other Telehealth services across the country have ceased services. Access and availability of Telehealth has accelerated access for many people who would not or could not seek care otherwise.

Hurley Organ Transplant Program

Hurley Organ Transplant Program Hurley provides close-to-home access to patients in need of a kidney or pancreas transplant. Patients are assured the highest quality of clinical care from Hurley Medical Center's highly-trained team, coupled with surgery at one of the most experienced transplant centers in the state of Michigan and the United States; Henry Ford Transplant Institute. In partnership with Henry Ford Transplant Institute, more than 100 kidneys are transplanted yearly, making it one of the nation's most successful programs. As one of only two multiple organ transplant centers in Michigan, the Institute also transplants bone marrow and all other main organs.

Prioritized Health Needs Addressed: Chronic Disease Burden

Hurley's Patient Resource and Community Advocate

The Patient Resources and Community Advocate position works towards identifying minority populations and engaging in communication to improve healthcare literacy, reduce disparities, identify access to care opportunities, reduce readmission rate, and improve patient experience through education and understanding. This community based job positions a Registered Nurse into community centers (such as churches, businesses, and neighborhoods) to nurture relationships and strengthen communication. Providing equitable healthcare access to the vulnerable residents of Genesee County endeavors to reduce chronic disease burden amongst residents (with a focus on Heart Health, Diabetes, Kidney disease, etc).

Hurley's Cardiac Rehabilitation Program

Hurley offers Phase I, Phase II, and Phase III Cardiac Rehab to qualifying patients with heart disease. It is a medically supervised program designed to help patients recover from a serious heart incident through monitored exercise.

Hurley's Pulmonary Rehabilitation Program

Hurley offers Phase I, Phase II, and Phase III programs for patients who suffer from a variety of lung disorders. This program includes a comprehensive evaluation, a monitored 12-16 week exercise program, and an optional maintenance program to help patients manage their condition and breathe easier.

Hurley's Specialty Senior Health Care

- Hurley continued to grow Palliative Care Services, with additional staff and added hours outpatient and at the Genesys Hurley Cancer Institute.
- Continuation of "HELP" (Hospital Elder Life Program) which places volunteers with elderly patients 70 years and older (similar to Child Life model in pediatrics). It is a proactive measure to protect against the risk of delirium and functional declines while hospitalized.
- Fast Track Emergency Room for Seniors/Bone Health program. All patients 65 years and older do not wait in the emergency department waiting room. Upon arrival, they are immediately fast-tracked into a room so they can be monitored.
- Osteoporosis Program protects geriatric patients from future fracture.
- The Geriatric Fracture Center specializes in returning hip fracture patients to the highest quality of living, as quickly as possible.
- Safe Steps Physical Therapy Program is a customized PT intervention program for the evaluation and treatment of the balance and coordination problems that lead to falls in older adults.
- Continued a partnership with Valley Area Agency on Aging (VAAA) on Transitions to Care.

Additional Efforts:

- The Breast Navigation Program helps to directly relieve disease burdens by helping patients plan care, clinical visits, answer questions and obtain funding to assist with extra bills that may arise. This program allows cancer patients to concentrate on treatment, wellness, and healing.
- The Congestive Heart Failure and Renal Nurse Navigator is available to patients with an overall goal of reducing readmissions. The Nurse Navigator helps answer questions, assists with symptom management, taking medications properly, promptly follows up with patients after discharge, and helps to schedule their follow-up appointments. The Nurse Navigator is on-call 24/7. Within 30 days of discharge, Heart Failure patients had readmission rates of 26% in 2017, since declining to 13% in 2021.
- A Lung Health Navigator is available during each step of a patient's lung related health care needs, providing information, knowledge, support, and guidance as needed to manage lung health. The Lung Navigator works with Primary Care Physicians and specialists to develop specialized treatment plans for patients.
- Hurley's Annual Vaccination fair is held every November. It was held as a drive-thru clinic due to the COVID-19 pandemic (in 2022) and returning as an in-person event in 2023 and 2024. Partnerships and sponsors make it possible to create more access to vaccinations.

Prioritized Health Needs Addressed: Maternal & Child Health

Hurley operates the region's only Level III Neonatal Intensive Care Unit, with over 1,400 – 1,700 discharges per year and supports many programs that promote healthy pregnancies and positive infant health outcomes.

Maternal Fetal Medicine (MFM)

The Maternal Fetal Medicine (MFM) program is here to support patients with preconception counseling, during pregnancy, and also offers multidisciplinary clinical care to patients with high-risk pregnancies. Hurley Medical Center has board-certified specialists, along with a team of experienced nurses, sonographers, dietitians, and genetic counselors that work closely together to monitor and manage even the most complex pregnancies. Using state-of-the-art technology, potential issues can be detected early and treatment can be provided when needed. There are a full range of services provided, including prenatal testing, fetal ultrasounds, and genetic counseling to cover all of the patient's needs. MFM is focused on supporting and guiding patients through the entire journey of pregnancy and delivery.

Maternal Infant Health Program (MIHP)

The Maternal Infant Health Program (MIHP) is Michigan's largest, evidence-based home visitation program for Medicaid eligible pregnant women and infants with a long-term goal to reduce maternal and infant morbidity and mortality. Hurley's program promotes healthy pregnancies, positive birth outcomes, and healthy infant growth and development. It is a supplement to regular prenatal/infant care and serves infants up to 12 months in their homes by a team of Registered Nurses, Licensed Social Workers, Registered Dieticians, Infant Mental Health Specialists, and Lactation Consultants. In combination with NFP, Hurley assists over 300 new moms/pregnant women and their babies up to age two.

Nurse Family Partnership (NFP)

The Nurse Family Partnership (NFP) program is a free program for first-time moms who are pregnant with their first child, who reside in eligible service areas, and income level falls within specific requirements. Under the mentorship of a personal nurse, new moms will build maternal confidence in activities such as breastfeeding, nutrition, child development, safe sleep techniques and more. New moms will also get necessary referrals for healthcare, childcare, job training and other programs which will help their family be more successful. In combination with MIHP, Hurley assists over 300 new moms/pregnant women and their babies up to age two. This program has implemented a virtual aspect during the COVID-19 pandemic.

Hurley Health Services Midwifery

Midwifery care for adults and teens offers a full range of healthcare services for women.

Center for Reproductive Medicine

Henry Ford's Center for Reproductive Medicine has a clinic on the campus of Hurley Medical Center and can help patients who seek reproductive medicine and fertility treatments.

Lactation Services

Consultants educate moms on how to latch or position the baby and manage issues related to lactation and infant feeding. Hurley's Lactation Consultants are RN's (Registered Nurses) and IBCLC's (International Board Certified Lactation Consultants), the highest level of lactation specialty available.

Diabetes during Pregnancy Education Program

Pregnant or soon-to-be pregnant women are offered diabetes education and medical management during their pregnancy. Virtual classes are available.

Phototherapy Lights

Five phototherapy lights (large enough to cover the infant from head to toe) are used in Hurley's Neonatal Intensive Care Unit. Preterm babies commonly need treatment for jaundice and light therapy lowers bilirubin quickly and safely.

Hurley Asthma Clinic/Home Management Program

Physicians and Respiratory Therapists work with patients and families to manage asthma with a focus on taking medications properly, trigger reduction, and include home visits. Roughly 80-90 children are seen in their homes. This program is facilitated by the Hurley Asthma Nurse Case Manager.

Camp Easy Breathers

Through a partnership with the YMCA of Greater Flint Camp Copneconic and various sponsors, Hurley is able to provide the annual 4-day daytime camp which focuses on giving children with asthma the experience of going to camp with the safety of having a Respiratory Therapist and Medical Team nearby. 25-30 children participate yearly. This program is facilitated by the Hurley Asthma Nurse Case Manager.

Pediatric Diabetes Education Program

Hurley offers the only diabetes pediatric education and management program of its kind in Genesee County. The program treats children with type 1 diabetes, type 2 diabetes, and prediabetes.

Additional Efforts:

- Hurley is a Blue Distinction Center+ for Maternity Care.
- The Center for Maternal Fetal Medicine is available for patients with high-risk pregnancies.
- Breastfeeding Support Clinic is offered weekly at the Hurley Children's Center.
- Hurley started "rooming in" for Neonatal Abstinence Syndrome (NAS) babies to give mothers time to bond with the baby until they are discharged.
- Supporting patients with parenting/breastfeeding classes for pregnant/new moms.
- Hurley participates in the Community Baby Shower which is offered annually and provides new or expecting parents with education and resources.

Prioritized Health Needs Addressed: Mental Health

Hurley continues to care for their mental health and substance abuse patient population at the Hurley Mental Health Associates building as well as through the adult inpatient behavioral health unit, the adolescent inpatient behavioral health unit, and through collaborations with Genesee Health System.

Advanced Neuropsychology & Pediatric Psychology Services (ANPPS)

Formerly known as the Brain Function Assessment Center, the Advanced Neuropsychology & Pediatric Psychology Service Center offers a variety of specialized services in an ethical, nurturing, and supportive manner across the lifespan, to include: children, adolescents, adults and their families. Various types of appointments are offered to meet patient's health needs. In-person appointments and telemedicine/video appointments are available.

Hurley Trauma Recovery Center

Hurley Medical Center provides a free, confidential, non-insurance billed, Trauma Recovery Program for both adult and pediatric patients that have been impacted by trauma, violence, sexual assault, etc. They coordinate immediate crisis support alongside medical care, follow up with patients after discharge, assist patients with continued symptom management, and connect patients to appropriate services (emergency shelter, food resources, legal support, etc) when necessary.

Hurley Adult Behavioral Health Unit

Hurley Medical Center offers inpatient treatment for adults coping with emotional, behavioral, and psychiatric issues.

Hurley Adolescent Behavioral Health Unit

Hurley Medical Center opened a 14-bed Adolescent Inpatient Unit providing acute short-term treatment for patients aged 12-17 who are in psychiatric crisis. Adolescent patients are cared for in a comfortable, secure environment and separated from the adult population.

Additional Efforts:

- Hurley offers Pediatric Psychology Services and offers evaluation, treatment planning, and therapy for an array of diagnoses and behavioral needs.
- Autism services are available at ANPPS.
- Hurley offers employees Employee Assistance Programs, mindfulness and wellness programs for coping and stress reduction, as well as a calm and relaxing weekly experience for employees to attend to provide them a brief reprieve from daily stressors.

Prioritized Health Needs Addressed: Safe & Affordable Drinking Water

Water Resources for Patients

Hurley Medical Center has provided its patients with pertinent resources such as water distribution sites, registration information for the Flint Registry, and the Flint Cares website link.

Pediatric Public Health Initiative (PPHI)

In partnership with Michigan State University, in 2016 Hurley Medical Center established the Pediatric Public Health Initiative (PPHI) as a model public health program to improve the outcomes of Flint children. Through community and clinical programs, childhood health policy/advocacy, and robust evaluation, the Pediatric Public Health Initiative works with the primary goal of mitigating the impact of the Flint Water Crisis and serving as a national resource for best practices. In connection with many local partners, including Flint's parents and kids, as a center of excellence, PPHI works to wrap Flint children in a nutrient-rich environment of development-promoting interventions.

Hurley's Children's Center

Hurley Children's Center (Pediatric clinic) at the Flint Farmers' Market offers many long-term services and resources to foster healing in response to the water crisis: a Fruit and Vegetable prescription program, Literacy/reading programs, positive parenting, recruiting families to enroll in the Flint Lead Registry, social needs screenings/referrals, including referrals to the Hurley Food FARMacy.

- Fruit and vegetable prescriptions have been distributed since beginning in February 2016.
- Imagination Library: Hundreds of thousands of books have been distributed in Flint through the program.
- The Born to Read program at the hospital is giving literacy bundles to every newborn before discharge and connects the family to Early On if they consent.
- The Hurley Children's Center also offers the Video Interaction Project (VIP). The VIP is an evidence-based parenting program that uses videotaping and developmentally-appropriate toys, books, and resources to help parents utilize pretend play, shared reading, and daily routines as opportunities for strengthening early development and literacy in their children.

Prioritized Health Needs Addressed: COVID-19 Response/Relief

Hurley Medical Center worked closely with the Genesee County Health Department and other community stakeholders to support pandemic response efforts throughout Genesee County. Since the onset of COVID-19, Hurley Medical Center continues to do viral testing for COVID-19 in the Emergency Department, Urgent Cares, and Clinics. Vaccines are also available in limited locations. Additionally, Hurley treats severe cases that require hospitalization.





120 W. First Street

Flint, Michigan 48502-1815

Business: 810-232-2228

Fax: 810-232-3332

E-mail: gfhc@flint.org | www.gfhc.org

